

Fast, Automatic, Reliable, Repeatable, Industrial & Productive

Stress_Tester
Automatic Digital Polarimeter

Stress_Tester

Automatic Digital Polarimeter



"Stress_Tester Performs Objective Evaluation of the Residual Stress in Eyewear Industry such as: SunLenses & SunGlasses"

About Stress_Tester

Using the state-of-the-art image acquisition and processing, the instrument **objectively measures residual mechanical stress in Eyewear Industry** and increase the production quality, product safety, and reduces costs.

Industrial & Productive

Stress_Tester is a fast, compact, rugged, accurate and **extremely easy-to-use equipment**, without any mechanical movement or adjustment, **designed for hard industrial environment** and heavy duty cycle use, perfect for massive production quality inspection close to the line control or at incoming check.

The user can visually monitor the positioning of the item while watching the **real-time video** streaming coming from the internal camera.

Features & Benefits

- Automatic Tester for Checking Residual Mechanical Stress in Eyewear
- Industry
- Complex Analysis in Single Acquisition - Discover the hidden material properties
- All Data stored in Encrypted Database – Ensure Data Integrity
- User Rights Management - Different levels of access to the software to manage rights to system features
- Recipe Management - Traceability of recipes, changes made and use in production
- Batch Management - Traceability of measurements performed on production batches
- Full Block of External Light - Closable Measuring Chamber
- Auto-Calibration - No Interruption of Analysis Cycles
- Fast Analysis in Few Seconds
- Static Device Without Moving Parts
- Ready to In-line use with I/O Module (optional)
- Automatic rotation and check of the samples at different angles with Smart_Rotatig_Robot (optional)
- Rugged Equipment, Suitable for Laboratory and Production line
- 100% Made in Italy, High Level of Quality and Innovation

Dedicated All-in-One PC



- Powerful All-in-One PC
- Monitor Full HD
- Height adjustable & tilt swivel rotate position
- Genuine Windows 11 PRO 64-bit
- Pre-installed TeamViewer app Support

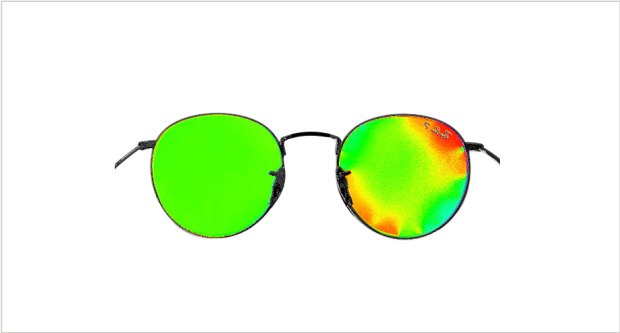
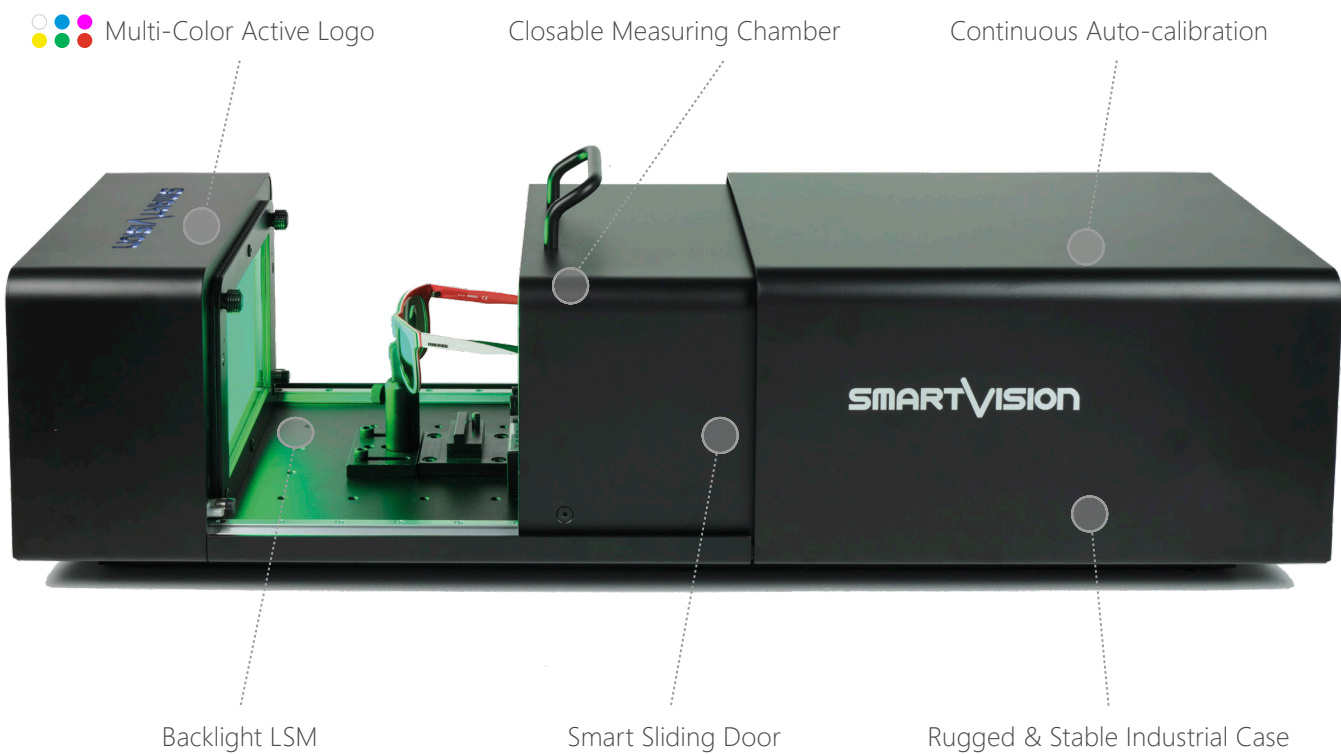
Dedicated Software



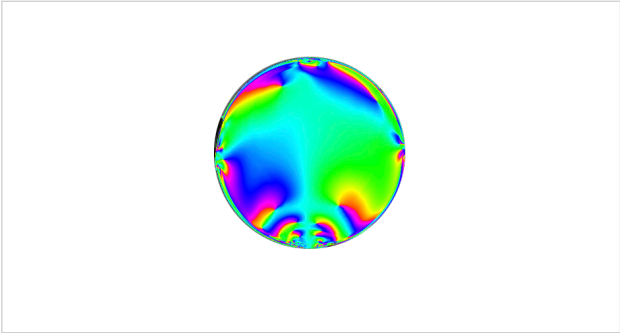
- Easy-to-Use with an intuitive GUI
- Camera live view for precise positioning
- Full automatic data report
- Hardware License Key
- User Management with different Access Privileges

Stress_Tester

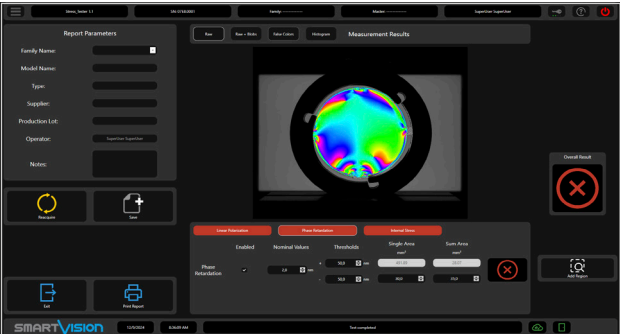
Hardware & Software Features



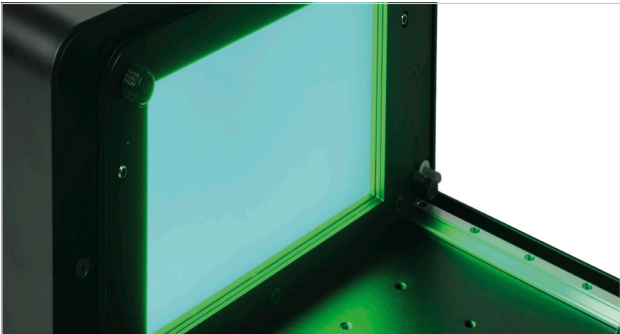
Example 1: Residual mechanical stress check in SunGlasses



Example 2: Residual mechanical stress check in uncut SunLenses



Software interface: The software is developed for a fast and easy analysis of the samples



Backlight LSM: optimized light emission for real-time visual inspection and better test performance

Stress_Tester

Technical Specifications

Dimensions (mm)	875 x 320 H. 260 (upper door handle included)
Weight (kg)	20 (excluding PC and tools)
Power Supply	110-240 Vac 50-60 Hz
Power Consumption	2 A
Communication Interface	USB 3
Case	Black Matt painted Anodized Aluminum
Optional PC Device	Powerful All-in-One PC, Full HD, Windows 11 PRO 64-bit
Software Interface	Multi Language Dynamic Setup (English, Italian, French, Simplified Chinese already installed)
User Management	User, SuperUser, Maintainer, Administrator (with login password and editable rights)
Data Report	xlsx, xls, pdf
Print Report	Windows installed Printer (optional pdf), xps
Statistical Analysis	Ready to connect with SPC software
PC Software Backup	USB stick containing the backup system (bootable system startup)
Online Support	Pre-installed TeamViewer app Support

Reach Excellence in Quality Control
with SmartVision's Technology



©2024, SmartVision. Technical specifications are approximated and are subject to change without notice. Printing errors excepted.

