

NEW



The Next Generation Lens Profile Check

SmartShape_Pro

High Performance Lens Shape
Testing Instrument

Smart_Shape_Pro

High Performance Lens Shape Testing Instrument



"Fast, Automatic, Objective, Repeatable & Easy-to-Use Equipment, Specifically Designed to Evaluation of Lens Shape"

Fast & Easy

Smart_Shape_Pro automatically checks in few seconds the **Geometry and the Dimension of the lens and its holes through a master**, which can be imported from a DXF or OMA file or directly acquired from the built-in camera.

Smart_Shape_Pro software is able to **analyze the shape of complex geometry of lens profiles** (like hooks). The instrument provides the user a prompt « Pass / Fail » signal output and automatically feeds a database with collected data.

Accurate

Smart_Shape_Pro provides objective and repeatable high precision measurements by **checking the main characteristics of the lens shape**, without any technical interpretation needed by the operator:

- Automatic evaluation of lens shape
- A/B axis length lens and holes check
- Absolute position check of holes respect of the lens center
- Automatic lens overlay with master profile
- Comparative check with a master lens
- Works with clear-to-dark lenses

Automatic & Productive

Smart_Shape_Pro definitively eliminates the uncertainty of traditional measuring instruments by **improving control** of the lens edging process and **increasing statistical process control (SPC)**. It also performs complete and automatic reports **reducing the time and the cost of controls**.

- Full check cycle and full report output in few seconds
- Full automatic traceability of all control activities
- Traceability of any modification of the lens master

Dedicated All-in-One PC



- Powerful All-in-One PC
- Full HD Touchscreen
- Monitor resolution 1920x1080 pixels
- Height adjustable & tilt swivel rotate position
- Genuine Windows 11 PRO 64-bit
- Pre-installed TeamViewer app Support

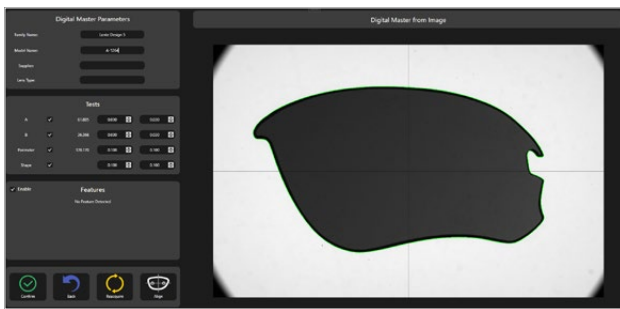
Dedicated Software



- Easy-to-Use with an intuitive GUI
- Camera live view for positioning
- Multilanguage
- Customizable setting parameters
- Full automatic data report
- Remotely managing Software Options
- Upgradability for future functions
- Hardware License Key

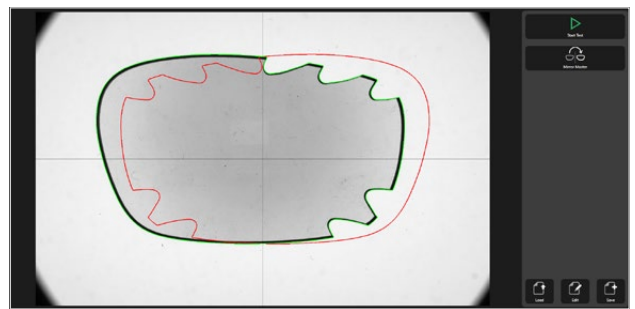
Smart_Shape_Pro

Hardware & Software Features



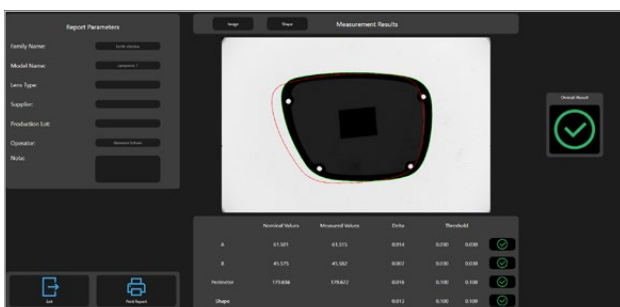
Digital Master

Create/Import reference model



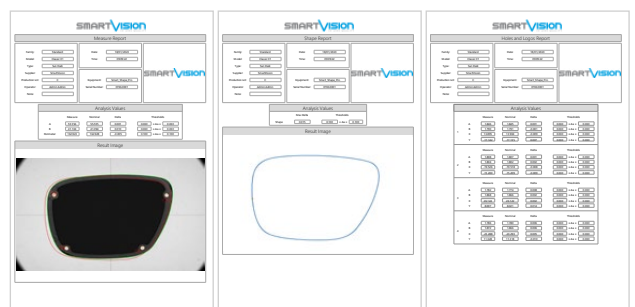
Mirror Mode

Check right/left lens using one master



Full Automatic Report

Example of passed lens test



Data Report

Example of full printable report

Smart_Shape_Pro

Technical Specification

FoV (Field of View) (mm)	108x73
FoV Type	Rectangular with vignetting
FoV Diagonal (mm)	125
FoV Area (mm ²)	7800
Measuring Chamber ² (mm)	200x230 H.240
Diascopic Light ¹	Collimated
Layout	Vertical
Light Receiving Lens	Telecentric
Dimensions (mm)	284x330 H.1255
Weight (kg)	45
Power Supply	110-240 Vac 50-60 Hz
Power Consumption	2 A
Communication Interface	USB 3

Optional PC Device	Powerful All-in-One PC, Full HD Touchscreen, Monitor resolution 1920x1080, Windows 11 PRO 64-bit
Software Interface	Multilanguage: English, Italian, Simplified Chinese, (all languages are editable).
User Management	4 user access levels that include: User, SuperUser, Maintainer, Administrator (with password login and editable rights)
CAD Import	OMA and DXF file for Profile Matching
Data Report	PDF and Excel format file
Production Batch	Automatic data export in CSV file
Statistical Analysis	Ready to connect with SPC software
PC Software Backup	USB stick containing the backup system (bootable system startup)
Online Support	Pre-installed TeamViewer app Support

1. Diascopic Light: Collimated backlight Projector with green led light.

2. The dimensions of the measuring chamber are not the dimensions of the Field of View, therefore they have not to be considered as test area.

Reach Excellence in Quality Control with SmartVision's Technology



©2023, SmartVision. Technical specifications are approximated and are subject to change without notice. Printing errors excepted.

SMARTVISION
IN LINE QUALITY

T. +39 0432 484765 | Info@SmartVision.it | www.SmartVision.it | SmartVision S.r.l. Italy

Ver01.EN.01.2023