



*Accurate, Rugged, Easy & Fast Reflectance Tester*

**Smart\_Reflect**

Hi-Performance UV-Visible  
Reflectance Spectrophotometer

# About Smart\_Reflect

## Hi-Performance UV-Visible Reflectance Spectrophotometer



*"Smart\_Reflect allows automatic, objective, easy and fast comparison of the Color Differences lens according to International Standard"*

### Easy & Fast

Smart\_Reflect with a new support system is the spectrophotometer specifically designed and optimized for SunGlasses & SunLenses Quality Controls.

The improved Graphical User Interface is **designed to better ensure the usability** by the operator and the modern development language of its software guarantees **speed record measurements** (1 second only).

### Automatic & Productive

Smart\_Reflect performs a **complete Check** of the Reflection Properties, according to **International Standard ISO 12312-1 (FullLens version) & ISO 8980-4 (Surface version)**, and the **Color Differences** compared to a Master.

Thanks to a **simple « Pass / Fail » semaphore output** result with Reflection Graph, there is no influence by the operator in valuating the test, and **not required of specific skills** to perform them. New extended user management features allow an easier management of production quality controls.

### Industrial & Smart

The **continuous pre-calibration** of the instrument not interruptions of the measuring cycles and the **innovative compact design**, with a dedicated button to make analysis start, allows **fast and easy check of the coating** of lens surfaces.

### Optional All-in-One PC



- Powerful All-in-One PC, 24" Full HD
- Monitor resolution 1920x1080 pixels
- Height adjustable & tilt swivel rotate position
- Genuine Windows 11 PRO 64-bit
- Pre-installed TeamViewer app Support

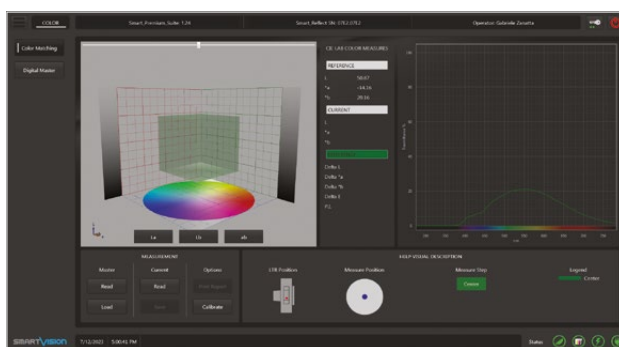
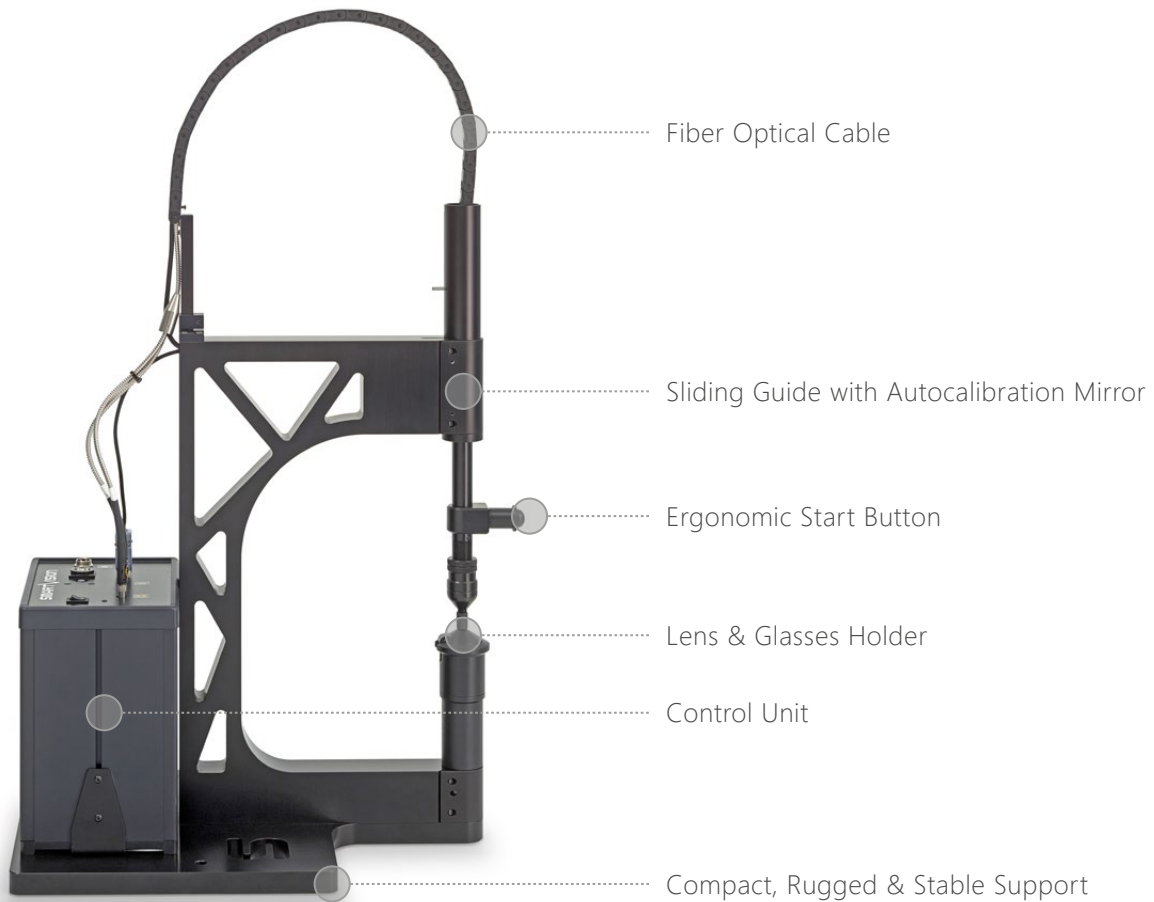
### Dedicated Software



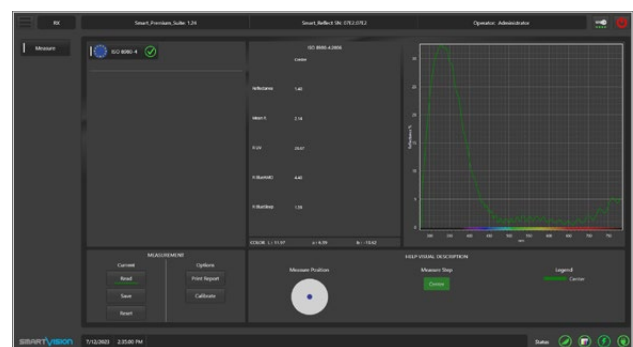
- Easy-to-Use with an intuitive GUI
- Customizable setting parameters
- Full automatic data report
- Multi language
- Remotely managing Software Options
- Upgradability for future Standards
- Hardware License Key

# Smart\_Reflect

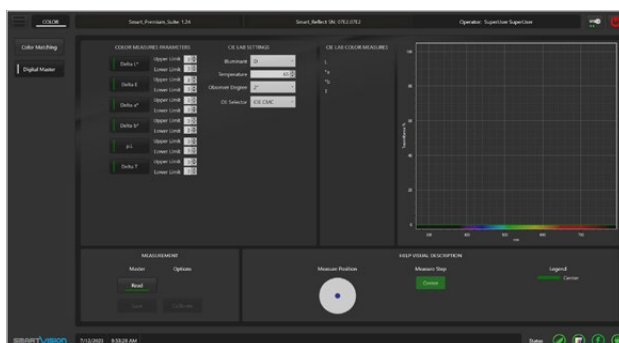
## Hardware & Software Features



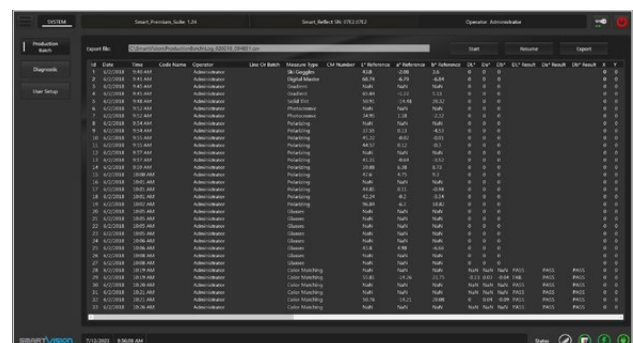
**Color Matching**  
Lens colorimetric measurements



**Ophthalmic**  
RX Plano Lens conformity check to ISO 8980-4



**Digital Master**  
Create model for reference use



**Production Batch**  
Includes all the values calculated

# Smart\_Reflect

## Technical Specifications

Main Functions	<ul style="list-style-type: none"><li>• « Pass / Fail » lamp signal indicator for every color and reflection check</li><li>• Setting of acceptance tolerances of color differences for different color and customers</li><li>• Digital Color-Master_Item Reference Management (Save &amp; Name, Load Model)</li><li>• Pointing-out the reason of a fail item</li><li>• One shot color analysis</li><li>• Display 3D graphics to view the color space, parallelepiped of acceptability and measured points</li><li>• Spectrum Stability Continuous Control [SSCC Feature] - Allows more accurate measurement</li><li>• Lamps Warm-up Dynamic Control [LWDC Feature] - Warm-up time will be minimum possible read from allowed by the hardware</li><li>• Auto-calibration of the instrument [CPCF Feature] - No visible calibration and no interruption of the measuring cycles</li><li>• Display of reflection curve with color indication for each frequency of light, zoom, pan and display of reflectance values for single wavelength</li><li>• Spectral reflection values file output</li><li>• Full automatic Production Batch in Excel file</li></ul>
Features	<ul style="list-style-type: none"><li>• Check cycle and full report output in less than 1 second</li><li>• Measurement range 280 - 780 nm</li><li>• Complete check of color differences <math>\Delta E</math>, <math>L^*</math>, <math>a^*</math>, <math>b^*</math></li><li>• Check of reflectance R and reflectance difference <math>\Delta R</math></li><li>• Complete check of reflection proprieties according to ISO 12312-1 (Smart_Reflect FullLens version)</li><li>• Complete check of reflection proprieties according to ISO 8980-4 (Smart_Reflect Surface version)</li><li>• CIELAB 1976, CIELAB 1994, CIELAB 2000, CMC color spaces with the following settings:<ul style="list-style-type: none"><li>- Illuminant Type: A, C, D</li><li>- Observer Degree: 2° and 10°</li><li>- Color perception index developed specifically for solar filters (P.I.)</li></ul></li></ul>
Dimensions (mm)	300x450 H.780
Weight (kg)	12 (excluding PC)
Power Supply / Consumption	110-240 Vac   50-60 Hz   2 A (12 Vdc)
Communication Interface	USB 2
Software Interface	Multi Language Dynamic Setup (English, Italian, French, Simplified Chinese already installed)
Data Report	xlsx, xls, pdf
Statistical Analysis	Ready to connect with SPC software
Optional PC Device	Powerful All-in-One PC, 24" Full HD, Monitor resolution 1920x1080, Windows 11 PRO 64-bit USB Drive with Backup Software (bootable system startup) Pre-installed TeamViewer app Support

Reach Excellence in Quality Control  
with SmartVision's Technology



FAST



EASY



ACCURATE



INDUSTRIAL



COMPACT



PRODUCTIVE



MADE IN ITALY

©2024, SmartVision. Technical specifications are approximated and are subject to change without notice. Printing errors excepted.

**SMARTVISION**  
IN LINE QUALITY