

NEW



State-of-the-art Fast Accurate Industrial Spectrophotometer

Smart_Color_Pro

Spectrophotometer for Transmittance Control of
Lenses, Eyeglasses & Visors for Sun, Sports & Safety

Smart_Color_Pro

State-of-the-art Fast Accurate Industrial Spectrophotometer



"Smart_Color_Pro allows Automatic, Objective, Easy & Fast Color Differences and International Standard Compliance Tests"

Easy & Fast

Smart_Color_Pro is the advanced and unique technical evolution of spectrophotometers, it is **specifically designed and optimized for transmittance controls** of: Lenses, Eyeglasses, Masks and Visors, for Sun, Sports and Safety use.

The innovative Smart_Premium_Suite software interface, designed by SmartVision, guarantees **measurements at a record speed** (just 1 second) and improves the usability by the operator.

Automatic & Productive

Smart_Color_Pro checks the **transmittance properties** according to all enabled International Standards, the **Yellow Index** and the **Color Differences** compared to a master lens. **Several International Standard Test** are optionally available to meet your specific needs.

The instrument immediately shows a « **Pass / Fail** » output, with no contribution nor interpretation by the operator and no requirements of specific skills to perform the tests. State-of-the-art user features allow an **easier management of production quality controls**, with new optional advanced reports: Master Technical Report, Benchmark Report and Process Control Report.

Accurate & Smart

The **innovative improved design** of the device allows fast and firm grip of the lens and accurate positioning, suitable also for glasses with frame, masks, goggles, visors and safety glasses.

No need of mechanical movements nor to dismount or cut the lenses to fit the device. A **wide range of Software Options** is available to perfectly suit every specific need.

Optional All-in-One PC



- Powerful All-in-One PC, 24" Full HD
- Monitor resolution 1920x1080 pixels
- Height adjustable & tilt swivel rotate position
- Genuine Windows 11 PRO 64-bit
- Pre-installed TeamViewer app Support

Dedicated Software



- Easy-to-use with an intuitive GUI
- T% graphic with color indication
- Live 3D color space visualization
- Customizable setting parameters
- Extended User Management Feature
- Lamps Warm-up Dynamic Control
- Spectrum Stability Continuous Control
- Full Excel and PDF data reports
- Remotely managing Software Options
- Upgradability for future Standards
- Hardware License Key

Smart_Color_Pro

Hardware Features



Application Examples



SunLenses



SunGlasses



SkiGoggles



Sports & Active Lifestyle Glasses



Helmet Visors



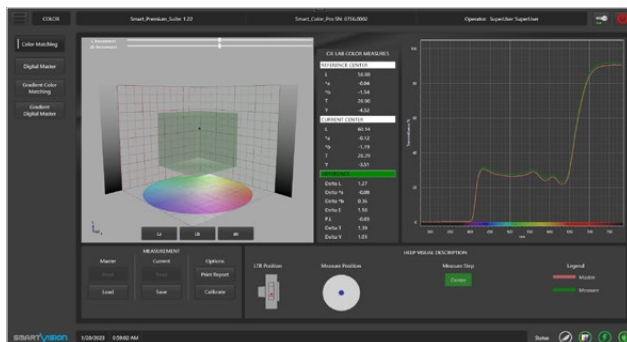
Sunglare Safety Glasses

Smart_Color_Pro

Software Features

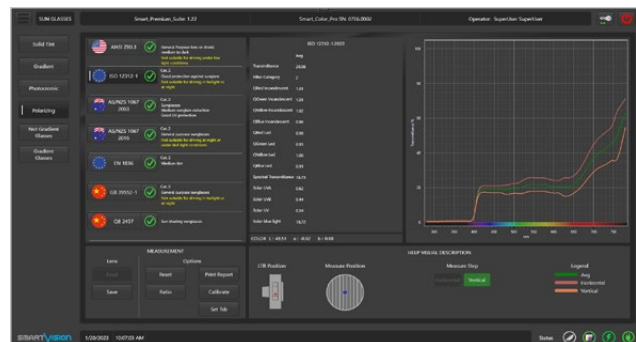


Solid Tint & Gradient
Transmittance Lens Conformity Check



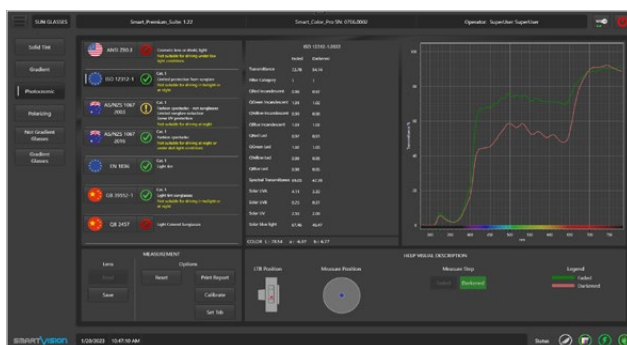
Color Matching

Colorimetric Measurement with Digital Master Database



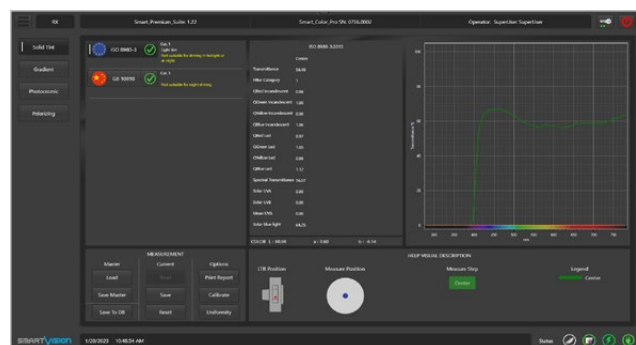
Polarizing (Optional)

SunGlasses & SkiGoggles Conformity Check with LTR value



Photocromatic (Optional)

SunLenses & SkiGoggles Lens Conformity Check

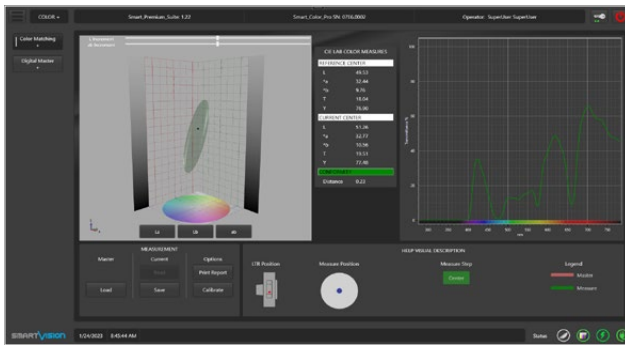


Ophthalmic (Optional)

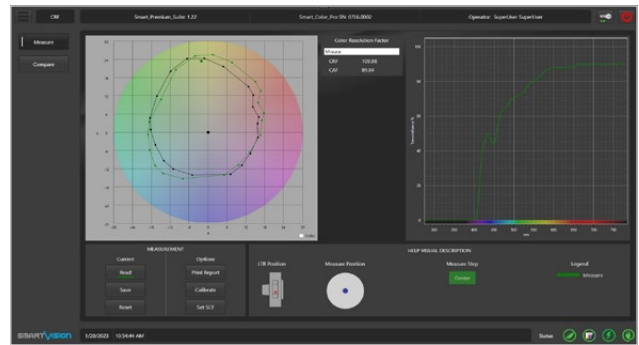
RX Plano Lens Conformity Check

Smart_Color_Pro

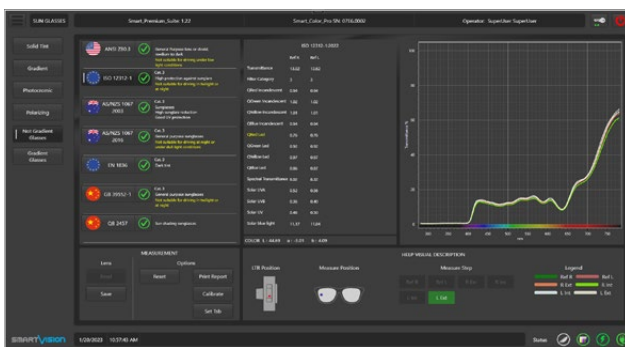
Software Features



Color+ (Optional)
Advanced Colorimetric Control



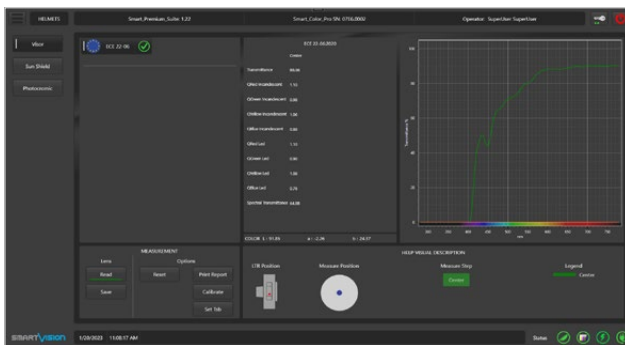
CRF (Optional)
Color Resolution Factor calculation (Hue.AI)



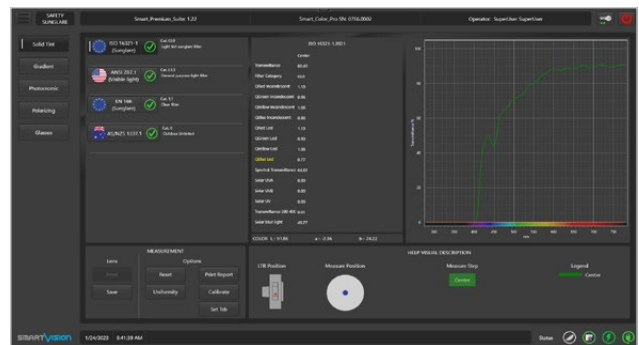
SunGlasses Imbalance Test (Optional)
SunGlasses & SkiGoggles Lens Conformity Check



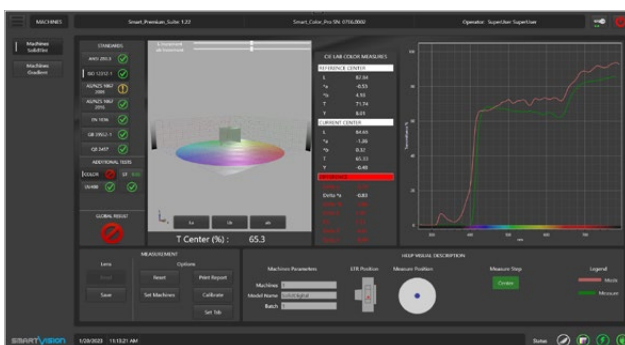
Sports (Optional)
Sports Skiing, Squash, Swimming Lens Conformity Check



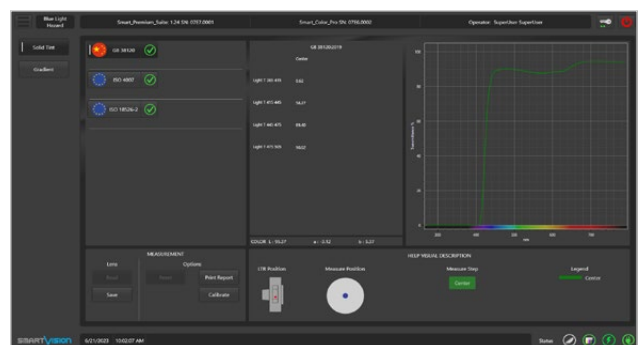
Helmet Visors (Optional)
Helmet Visors Conformity Check



Safety (Optional)
SunLenses & Ophthalmic Lens conformity check



Machine (Optional)
Merge of "Color Matching" & "International Standard" Tests



Blue-Light Hazard (Optional)
GB/T 38120, ISO 4007 & ISO 18526-2 Standards Check

Smart_Color_Pro

Technical Specifications

| | |
|----------------------------|------------------------------------------------------------------------------------------------------------------------------------------------------------------------------------------------------------------------------------------------------------------------------------------------------------------------------------------------------------------------------------------------------------------------------------------------------------------------------------------------------------------------------------------------------------------------------------------------------------------------------------------------------------------------------------------------------------------------------------------------------------------------------------------------------------------------------------------------------------------------------------------------------------------------------------------------------------------------------------------------------------------------------------------------------------------------------------------------------------------------------------------------------------------------------------------------------------------------------------------------------------------------------------------------------------------------------------------------------------------------------------------------------------------------------------------------------------------------------------------------------------------------------------------------------------------------------------------------------------------------------------------------------------------------------------------------------------------------------------------------------------------------------------------------------------------------------------------------------------------------------------------------------------------------------------------------------|
| Main Functions | <ul style="list-style-type: none">• Individual « Pass / Fail » lamp signal indicator for every single International Standard• Customizable setting of accepted tolerance of color differences• Digital Color Master Item Reference Management (Save & Name, Load Model)• Points out the reason of a failure• One shot color analysis• Display 3D graphics to view the color space, parallelepiped of acceptability and measured points• Spectrum Stability Continuous Control (Allows more accurate measurement)• Lamps Warm-up Dynamic Control (Warm up time will be minimum possible allowed by the hardware)• Auto-calibration of the instrument (No visible calibration and no interruption of the measuring cycles)• Display of transmittance curve with color indication for each frequency of light, zoom, pan and display of transmittance values for single wavelength• Full automatic Technical Data Sheet (International Standards and Color report) reports on PDF or direct print• Spectral transmittance values file output• Full automatic Production Batch in Excel file |
| Features | <ul style="list-style-type: none">• UV-VIS transmittance• Measurement wavelength range: 270 - 790 nm• Complete check of transmittance proprieties according to all uploaded International Standards• Complete check of color differences ΔE, L^*, a^*, b^*, transmittance and Yellow Index• Filter category• CIELAB 1976, CIELAB 1994, CIELAB 2000, CMC color spaces with the following settings<ul style="list-style-type: none">- Illuminant Type: A, C, D, F- Observer Degree : 2° and 10°- Color perception index developed specifically for solar filters (P.I.)• Signal light recognition for incandescent light (option led light)• Optional:<ul style="list-style-type: none">- Polarized Lenses Test (Transmittance test for polarized lenses)- Photochromic Lenses Test (Transmittance test for photochromic lenses)- Uniformity of Lenses Test (Transmittance test for uniformity check)- Sunglass Imbalance Test (Transmittance test for eyeglasses)- Function Mode "SunGlasses"- Function Mode "Sports Skiing"- Function Mode "Sports Squash"- Function Mode "Sport Swimming"- Function Mode "RX"- Function Mode "Aging RX"- Function Mode "Safety Sunglare"- Function Mode "Helmets"- Function Mode "Machine" (Merge of Color Matching Mode Tests and International Standard Tests in one single Screen, Shot and Report)- Function Mode "CRF" (Color Resolution Factor: Measure and Comparison)- Function Mode "Color+" (Artificial Intelligence Algorithm for Color Evaluation Machine Learning)- Function Mode "Blue-Light Hazard Check" (It includes GB/T 38120, ISO 4007 & ISO 18526-2 Standards) |
| Dimensions (mm) | 600 x 130 x 186 (lateral knobs included) |
| Weight (kg) | 7,80 (excluding PC, tools and cables) |
| Power Supply / Consumption | 110-240 Vac 50-60 Hz 2 A (12 Vcc Included) |
| Software Interface | Multi Language Dynamic Setup (English, Italian, French, Simplified Chinese already installed) |
| Data Report | xlsx, xls, pdf |
| Statistical Analysis | Ready to connect with SPC software |
| Optional PC Device | Powerful All-in-One PC, 24" Full HD, Monitor resolution 1920x1080, Windows 11 PRO 64-bit USB Drive with Backup Software (bootable system startup) Pre-installed TeamViewer app Support |

©2024, SmartVision. Technical specifications are approximated and are subject to change without notice. Printing errors excepted.

