



NEW

*Fast, Easy, Accurate, Compact, Modular, Rugged*

**Easy\_Spectro\_RX**  
Industrial Spectrophotometer  
for RX & Plano Lenses

# Easy\_Spectro\_RX

Industrial Spectrophotometer for RX & Plano Lenses



*"Fast, Easy,  
Accurate, Compact,  
Modular, Industrial  
Spectrophotometer  
for Transmittance  
& Color Check"*

## Versatile & Fast

Automatic Spectrophotometer for Transmittance & Color Check, Easy\_Spectro\_RX is IDEAL for Quality Control of Plano & RX Lenses, SunGlasses, Eyewear for Sport & Swim, Ski Goggles, Motor Visors, Colored Glass, Plastic Film & other Translucent Materials in any industrial and labs environment.

The innovative Smart\_Premium\_Suite software interface combined with Easy\_Spectro\_RX guarantees measurements at a record speed (just 1 second) and improves the usability by the operator.

## Smart & Modular

SmartVision provides with the software a **Wide Range of Smart Features** such as: 3D graphics to check Color Matching, Advanced Digital Color Master Management, Complete and Configurable Production Batch, Data Report in Pdf and Excel format, Multi language interface, Online Remote Support, **Continuous Product Improvement** and more!

Many Optional Modular Software Features are moreover dedicated to the **Eyewear and Optical sector**, in accordance with Reference International Standards and specifically designed for plano and ophthalmic lenses.

## Highlights

- Accurate Spectrophotometer in the range: 355 - 790 nm
- Very Easy-to-Use with Friendly User Interface
- Check Cycle and Full Automatic Report Output in Few Seconds
- Immediate Visualization of Analysis Results
- Continuous pre-calibration of the instrument. No interruptions during the measuring cycles
- Customizable software, according to needed International Standards
- Wide Range of Modular Options
- Rugged Equipment, Suitable for Laboratory and Production line
- 100% Made in Italy: High Level of Quality and Innovation

## Optional All-in-One PC



- Powerful All-in-One PC, 24" Full HD
- Monitor resolution 1920x1080 pixels
- Height adjustable & tilt swivel rotate position
- Genuine Windows 11 PRO 64-bit
- Pre-installed TeamViewer app Support

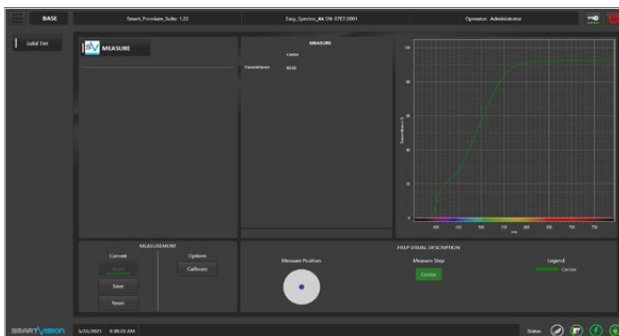
## Dedicated Software



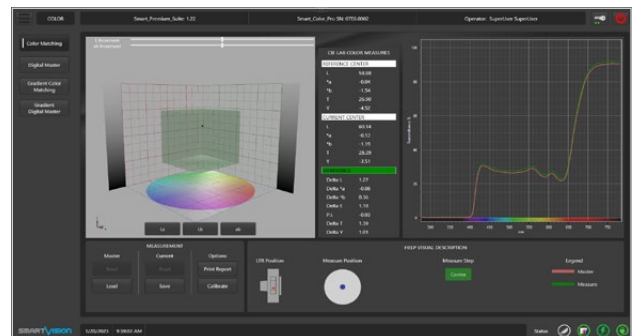
- Easy-to-Use with an intuitive GUI
- Customizable setting parameters
- Full automatic data report
- Multi language
- Remotely managing Software Options
- Upgradability for future Standards
- Hardware License Key

# Easy\_Spectro\_RX

## Hardware & Software Features



**Basic Mode:** it includes Transmittance Measurement with T% Value, Spectral Graph, Filter Category and Measurement Database.



**Color Matching (Optional):** Colorimetric measurement including Lab Value, Lab Difference to Master, Color Check according to Tolerances and Yellowness Index.

### Optional Modular Software Features:

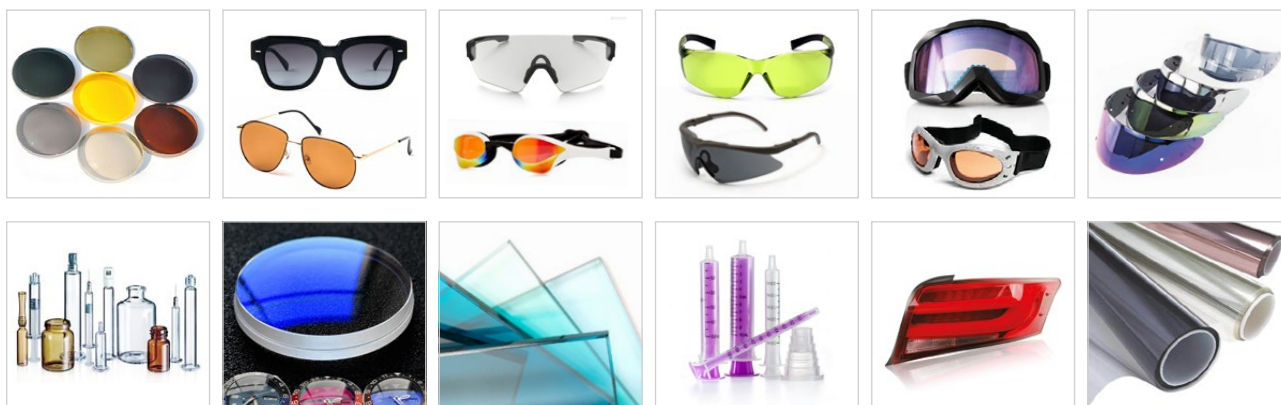
- Complete check of color differences  $\Delta E$ ,  $L^*$ ,  $a^*$ ,  $b^*$ , transmittance and Yellow Index
- Signal light recognition for LED light
- Polarized Lenses Test (Transmittance test for polarized lenses)
- Photochromic Lenses Test (Transmittance test for photochromic lenses)
- Uniformity of Lenses Test (Transmittance test for uniformity check)
- Sunglass Imbalance Test (Transmittance test for eyeglasses)
- Function Mode "SunGlasses"
- Function Mode "Sports Skiing"
- Function Mode "Sports Squash"
- Function Mode "Sport Swimming"
- Function Mode "RX"
- Function Mode "Aging RX"
- Function Mode "Safety Sunglare"
- Function Mode "Helmets"
- Function Mode "Machine" (Merge of Color Matching Mode Tests and International Standard Tests in one single Screen, Shot and Report)
- Function Mode "CRF" (To Measure the Color Resolution Factor and Comparing Lenses)
- Function Mode "Color+" (Artificial Intelligence Algorithm for Color Evaluation Machine Learning)
- Function Mode "Blue-Light Hazard Check" (this mode includes "GB/T 38120-2019", "ISO 4007:2018" and "ISO 18526-2:2020" International Standards Check)

# Easy\_Spectro\_RX

## Technical Specifications

<b>Functions</b>	<ul style="list-style-type: none"> <li>• Individual « Pass / Fail » lamp signal indicator for every single International Standard Enabled</li> <li>• Customizable setting of accepted tolerance of color differences</li> <li>• Digital Color Master Item Reference Management (Save &amp; Name, Load Model)</li> <li>• Points out the reason of a failure</li> <li>• One shot analysis</li> <li>• Display 3D graphics to view the color space, parallelepiped of acceptability and measured points</li> <li>• Spectrum Stability Continuous Control (Allows more accurate measurement)</li> <li>• Lamps Warm-up Dynamic Control (Warm up time will be minimum possible allowed by the hardware)</li> <li>• Auto-calibration of the instrument (No visible calibration and no interruption of the measuring cycles)</li> <li>• Display of transmittance curve with color indication for each frequency of light, zoom, pan and display of transmittance values for single wavelength</li> <li>• Full automatic Technical Data Sheet (International Standards and Color report) reports on PDF or direct print</li> <li>• Spectral transmittance values file output</li> <li>• Full automatic Production Batch in Excel file</li> </ul>
<b>Features</b>	<ul style="list-style-type: none"> <li>• VIS Transmittance Check &amp; UV Transmittance Display in the Range 355 - 400 nm</li> <li>• Measurement Wavelength in the Range 355 - 790 nm</li> <li>• Transmittance Range: 2 - 100 %</li> <li>• Transmittance Proprieties Check of Visible Range in According to all Enabled International Standards</li> <li>• CIELAB 1976, CIELAB 1994, CIELAB 2000, CMC color spaces with the following settings <ul style="list-style-type: none"> <li>- Illuminant Type: A, C, D, F</li> <li>- Observer Degree : 2° and 10°</li> <li>- Color perception index developed specifically for solar filters (P.I.)</li> </ul> </li> </ul>
<b>Dimensions (mm)</b>	460 x 55 x 185 (lateral knobs included)
<b>Weight (kg)</b>	4,60 (excluding PC, tools and cables)
<b>Power Supply / Consumption</b>	110-240 Vac   50-60 Hz   1 A (24 Vdc)
<b>Communication Interface</b>	USB 2
<b>Software Interface</b>	Multi Language Dynamic Setup (English, Italian, French, Simplified Chinese already installed)
<b>Data Report</b>	xlsx, xls, pdf
<b>Statistical Analysis</b>	Ready to connect with SPC software
<b>Optional PC Device</b>	Powerful All-in-One PC, 24" Full HD, Monitor resolution 1920x1080, Windows 11 PRO 64-bit USB Drive with Backup Software (bootable system startup) Pre-installed TeamViewer app Support

## Application Examples



©2024, SmartVision. Technical specifications are approximated and are subject to change without notice. Printing errors excepted.