



High Performance Lens Shape Quality Control Equipment

Smart_Base

Fast Automatic Lens Curve Radius & Base Meter

About Smart_Base

Fast Automatic Lens Curve Radius & Base Meter



"Smart_Base allows automatic, objective, repeatable, easy and fast Lens Curve Radius & Base Meter check"

Easy & Fast

Smart_Base by SmartVision is the first and unique instrument designed to perform **accurate and automatic check of lens' radius measure and base evaluation** in a easy and fast way.

This device is a revolutionary digital evolution of traditional profile projector. Smart_Base finds the outermost circumference of the sphere generated by the lens and gives the output in less than a second.

Automatic & Productive

Smart_Base provides objective and repeatable measures and signals a **simple « Pass (green) / Fail (red) » signal output**, with no contribution nor influence by the operator.

The equipment ensures a full automatic measurement and reporting of all activities in excel and image files.

Industrial & Compact

Smart_Base is a Fast, Compact, Resistant, Static, Easy-to-Use and Easy to Configure machine, designed for harsh environments and heavy duty cycles use.

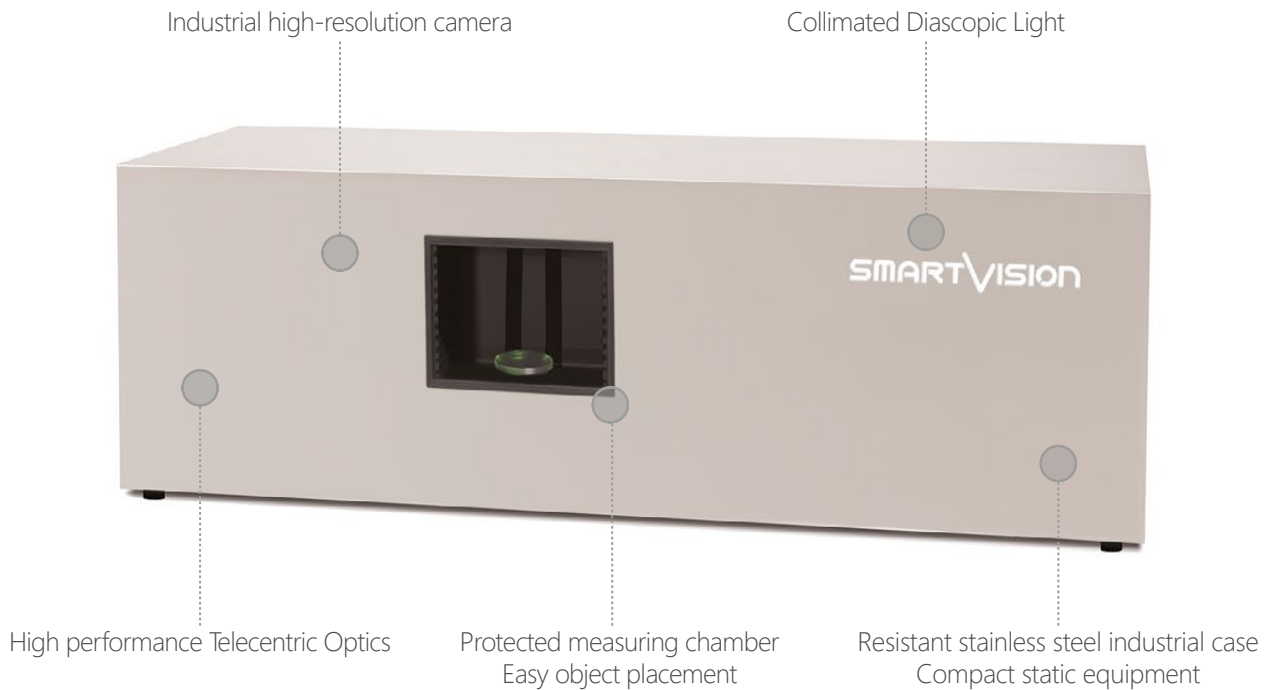
Application Cases



- Clear and tinted lenses
- Glass and plastic lenses
- Semi-finished single vision blanks for conventional or freeform technology, in any material and index
- Polarizing thermoformed wafers
- Glass moulds for lens casting production

Hardware Features

Smart_Base: Fast Automatic Lens Curve Radius & Base Meter



Dedicated Software

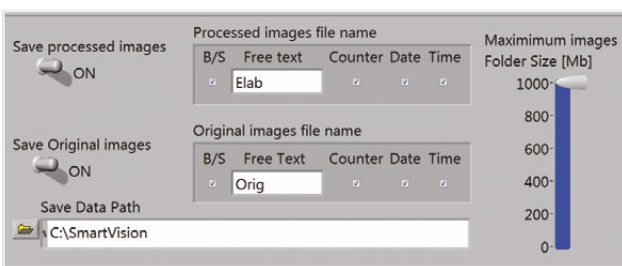
Smart_Base: Fast Automatic Lens Curve Radius & Base Meter



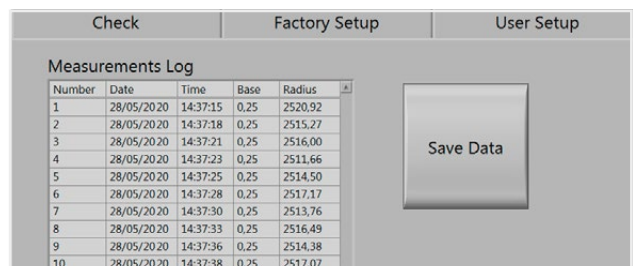
Example of "Pass (green)" Check



Example of "Fail (red)" Check



User Setup



Production Batch

Technical Specifications

Smart_Base: Fast Automatic Lens Curve Radius & Base Meter

Main Functions

- Easy and fast Load / Unload of any component to be checked
- Over 2.000 contactless and interpolated measuring points
- User interface designed for touch screen, no mouse needed (for manufacturing workers)
- Live view image
- Enlarged visualization of lens profile and defects
- Auto-Tracking of part in the field of view (FoV)
- Ideal curve (green line) automatic overlaps the lens' image to get a visual feedback of lens' curve non-conformity
- Image Zoom feature to analyze full profile defects
- Production automatic batch
- Full automatic report

Field of View (FoV) (mm)	76x26
FoV Type	Rectangular
FoV Diagonal (mm)	80
FoV Area (mm ²)	1970
Diascopic Light	Colimated
Light receiving lens	Telecentric lens
Layout usage	Horizontal
Case	Resistant stainless steel
Dimensions (mm)	850x280 H.280 (excluding PC)
Weight (kg)	30 (excluding PC)
Operation ambient °C	+10 to +40°C
Power supply	110-240 Vac
Communication Interface	Ethernet
Optional PC Device	Powerful All-in-One PC, FULL HD touchscreen, Monitor resolution 1920x1080, Windows 11 PRO 64-bit
Data Report	xls, csv
Print Report	Windows installed Printer (optional pdf), xps
Online Support	Pre-installed TeamViewer app Support

Reach Excellence in Quality Control
with SmartVision's Technology



©2023, SmartVision. Technical specifications are approximated and are subject to change without notice. Printing errors excepted.

