



# Smart\_Shape

High Performance Lens Shape Control Equipment



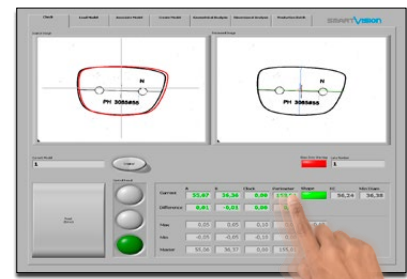
*"Fast, Automatic, Objective, Repeatable & Easy-to-Use Equipment, Specifically Designed to Evaluation of Lens Shape"*

## Check Section

Smart\_Shape automatically checks in few seconds the length of the lenses through a master, thanks to a simple lamp output « Pass / Fail », without any further interpretations needed by the operator. It provides objective and repeatable high precision measurements and checks the main characteristics of the lens shape.

- Automatic evaluation of lens shape
- Automatic overlapping of current and master lens profile
- Comparative check with a master lens

## Smart Software: TOUCH & MEASURE!

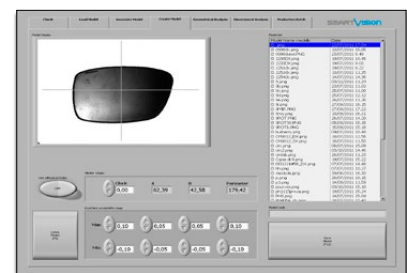


- Multi touch-screen software

## Geometric Analysis

Smart\_Shape performs automatically the Geometrical and Dimensional Analysis section.

- Lens perimeter length (Clock)
- A/B axis length
- Analysis shape of the lenses
- Absolute perimeter control
- Works with clear-to-dark and stable positioning lenses

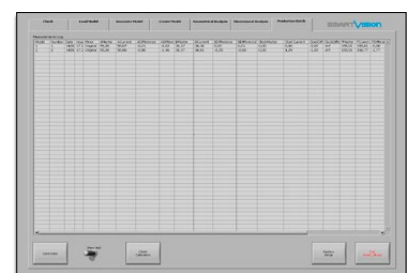


- Create Model Section

## Dimensional Analysis

Smart\_Shape definitively removes the uncertainty of traditional measure instruments. It improves the lens edging process control, it increases the statistic process control (SPC), it performs full and automatic reporting and reduces time and cost of controls.

- Full check cycle and full report output in few seconds
- Full automatic traceability of all activities



- Automatic data report

# Hardware Features

## Smart\_Shape



Resistant stainless steel industrial case  
Compact static equipment

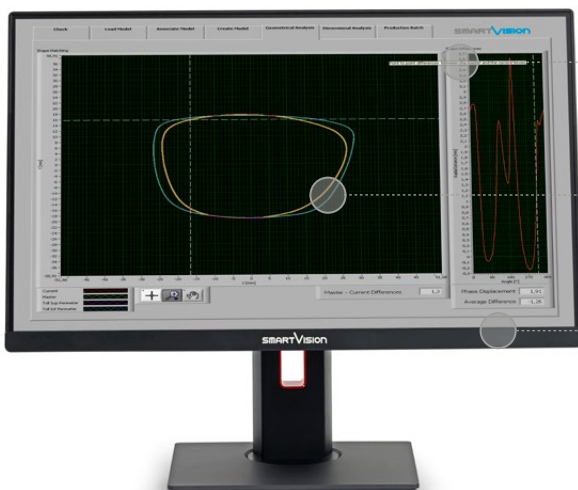
Industrial high resolution camera

High performance Telecentric Optics

Protected measuring chamber  
Easy object placement  
Height-adjustable interchangeable glass  
Customizable loading plate

Collimated Diascopic Light

## Dedicated All-in-One PC



Clear and objective result display

Intuitive touch screen measurements  
Easy programs recording with finger  
Automatic master lens profile match

Powerful All-in-One PC with FULL HD touchscreen

# Smart\_Shape

## Technical Specification

Field of View <sup>2</sup> (FoV) (mm)	108x73
FoV Type	Rectangular with vignetting
FoV Diagonal (mm)	125
FoV Area (mm <sup>2</sup> )	7800
Measuring Chamber <sup>2</sup> (mm)	200x230 H.240
Diascopic Light <sup>1</sup>	Collimated
Layout	Vertical
Light receiving lens	Telecentric
Dimensions (mm)	284x330 H.1255
Weight (kg)	45
Power supply	110-240 Vac   50-60 Hz
Power consumption	2 A
Communication Interface	USB 3

Optional PC Device	Powerful All-in-One PC, Full HD Touchscreen, Monitor resolution 1920x1080, Windows 10 PRO 64-bit
Software Interface	Language: English
PC Software Backup	USB stick containing the backup system (bootable system startup)
Online Support	Pre-installed TeamViewer app Support

1. Diascopic Light: Collimated Projector with green led light or Standard Directional led backlight.
2. The dimensions of the measuring chamber are not the dimensions of the Field of View (FoV), therefore they have not to be considered as test area.

Reach Excellence in Quality Control  
with SmartVision's Technology



©2022, SmartVision. Technical specifications are approximated and are subject to change without notice. Printing errors excepted.

**SMARTVISION**  
IN LINE QUALITY

T. +39 0432 484765 | Info@SmartVision.it | www.SmartVision.it | SmartVision S.r.l. Italy