



Accurate, Rugged, Easy & Fast Reflectance Tester

Smart_Reflect
Hi-Performance UV-Visible
Reflectance Spectrophotometer

About Smart_Reflect

Fast Industrial Spectrophotometer created to measure Coating Colour



"Smart_Reflect allows automatic, objective, easy and fast comparison of the Color Differences lens according to International Standard"

Easy & Fast

Smart_Reflect with a new support system is the spectrophotometer specifically designed and optimized for SunGlasses and SunLenses Quality Controls.

The improved Graphical User Interface is designed to better ensure the usability by the operator and the modern development language of its software guarantees speed record measurements (1 second only).

Automatic & Productive

Smart_Reflect performs a complete Check of the Reflection Properties, according to International Standard ISO 8980-4, and the Color Differences compared to a Master.

Thanks to a simple « Pass / Fail » semaphore output result with Reflection Graph, there is no influence by the operator in valuating the test, and not required of specific skills to perform them. New extended user management features allow an easier management of production quality controls.

Industrial & Smart

The continuous pre-calibration of the instrument not interruptions of the measuring cycles and the innovative compact design, with a dedicated button to make analysis start, allows fast and easy check of the coating of lens surfaces.

Dedicated All-in-One PC



- Powerful All-in-One PC
- Full HD Touchscreen
- Monitor resolution 1920x1080 pixels
- Height adjustable & tilt swivel rotate position
- Genuine Windows 10 PRO 64-bit
- Pre-installed TeamViewer app Support

Dedicated Software



- Easy-to-Use with an intuitive GUI
- Customizable setting parameters
- Full automatic data report
- Multi language
- Remotely managing Software Options
- Upgradability for future Standards
- Hardware License Key

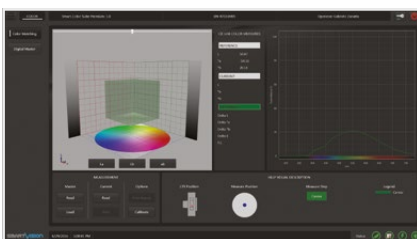
Hardware Features

Fast Industrial Spectrophotometer created to measure Coating Colour

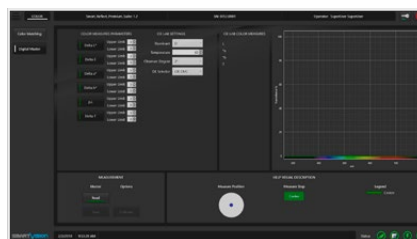


Software Features

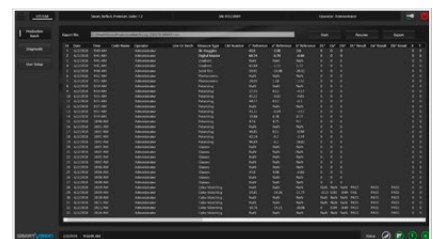
Advanced Spectrophotometer for SunLenses & SunGlasses producers



Color Matching
Lens colorimetric measurements



Digital Master
Create model for reference use



Production Batch
Includes all the values calculated

Technical Specifications

Fast Industrial Spectrophotometer created to measure Coating Colour

Main Functions

- Pass-Fail lamp for color and reflection check
- Setting of acceptance tolerances of color differences for different color and customers
- Digital Color-Master_Item Reference Management (Save & Name, Load Model)
- Pointing-out the reason of a fail item
- One shot color analysis
- Display 3D graphics to view the color space, parallelepiped of acceptability and measured points
- Spectrum Stability Continuous Control [SSCC Feature] - Allows more accurate measurement
- Lamps Warm-up Dynamic Control [LWDC Feature] - Warm-up time will be minimum possible read from allowed by the hardware
- Auto-calibration of the instrument [CPCF Feature] - No visible calibration and no interruption of the measuring cycles
- Display of reflection curve with color indication for each frequency of light, zoom, pan and display of reflectance values for single wavelength
- Spectral reflection values file output
- Full automatic Production Batch in Excel file
- Check cycle and full report output in less than 1 second
- Measurement range 280 - 780 nm
- Complete check of color differences ΔE , L^* , a^* , b^*
- Check of reflectance R and reflectance difference ΔR
- Complete check of reflection proprieties according to ISO 8980-4
- CIELAB 1976, CIELAB 1994, CIELAB 2000, CMC color spaces with the following settings:
 - Illuminant Type: A, C, D
 - Observer Degree: 2° and 10°
 - Color perception index developed specifically for solar filters (P.I.)

Dimensions (mm)	300x450 H.780
Weight (kg)	12 (excluding PC)
Power Supply & Consumption	110-240 Vac 50-60 Hz 2 A (12 Vac Included)
Communication Interface	USB 2
Case	Aluminum, Black Opaque painted
Optional PC Device	Powerful All-in-One PC, Full HD Touchscreen, Monitor resolution 1920x1080, Windows 10 PRO 64-bit
Software Interface	Multi Language Dynamic Setup (English, Italian, French, Simplified Chinese already installed)
Data Report	xlsx, xls, pdf
Statistical Analysis	Ready to connect with SPC software
PC Software Backup	USB stick containing the backup system (bootable system startup)
Online Support	Pre-installed TeamViewer app Support

Reach Excellence in Quality Control
with SmartVision's Technology



©2022, SmartVision. Technical specifications are approximated and are subject to change without notice. Printing errors excepted.

SMARTVISION
IN LINE QUALITY