



Fast, Industrial, Accurate & Rugged Uniformity Tester

Easy_Tester_Pro

Automatic Uniformity Tester according to ISO 12312-1, GB 39552.1, ANSI Z80.3, ISO 16321-1, EN 174 & ISO 18527-1

About Easy_Tester_Pro

Automatic Uniformity Tester for Optical Industry



"Easy_Tester_Pro allows a complete uniformity check for SunLenses, SunGlasses, Masks and SkiGoggles according to International Standards"

Uniformity Tester

Easy_Tester_Pro is the Worldwide Optical Market Standard Device that performs a **complete and automatic Uniformity Check** of SunLenses, SunGlasses with frame and Masks in according to International Standards ISO 12312-1, GB 39552.1, ANSI Z80.3, ISO 16321-1 and, for SkiGoggles, EN 174, ISO 18527-1.

Easy_Tester_Pro controls the whole test area, in a few seconds, without any mechanical movement or adjustment, avoiding operator's interpretation and influence.

Fast & Easy

The SunGlasses are placed in a tool that simulates a Headform according to ISO 18526-4:2018 Type 1-M Standard (1-S & 2-M Optional). While watching the **real-time video streaming** coming from the internal camera, the operator can control the alignment and visually check the **gradient pattern orientation**.

It is possible to examine relative differences in position and inclination between the filters. **No mechanical setup** is required.

Easy_Tester_Pro software provides the offset of the points measurement matrices "Big Head" and "Small Head".

Industrial & Productive

Its intuitive **touch screen user-interface** makes Easy_Tester_Pro easy-to-use even for unskilled workers. The machine is perfect for massive production **quality inspection, close to the line control and incoming review**.

Accurate & Smart

This Uniformity Tester provides accurate and repeatable measurements and outputs a **simple « Pass / Fail » lamp** showing a complete result screen view. The results can be print or export in excel and pdf files.

Dedicated All-in-One PC



- Powerful All-in-One PC
- Full HD Touchscreen
- Monitor resolution 1920x1080 pixels
- Height adjustable & tilt swivel rotate position
- Genuine Windows 11 PRO 64-bit
- Pre-installed TeamViewer app Support

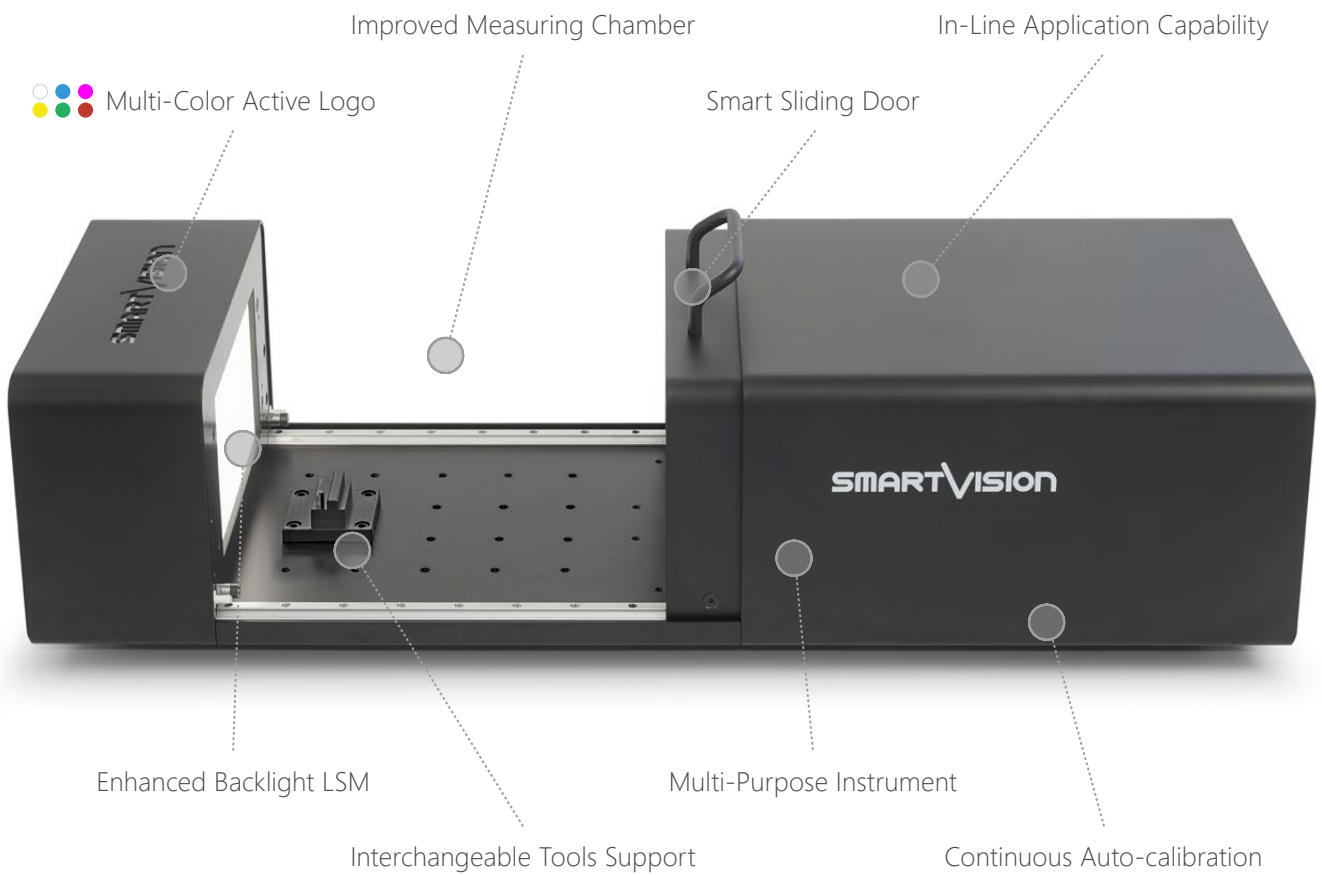
Dedicated Software



- Easy-to-use with an intuitive GUI
- Camera live view for precise positioning
- Customizable setting parameters
- Full automatic data report
- Remotely managing Software Options
- Upgradability for future Standards
- Hardware License Key

Hardware Features

Easy_Tester_Pro: Automatic Uniformity Tester for Optical Industry



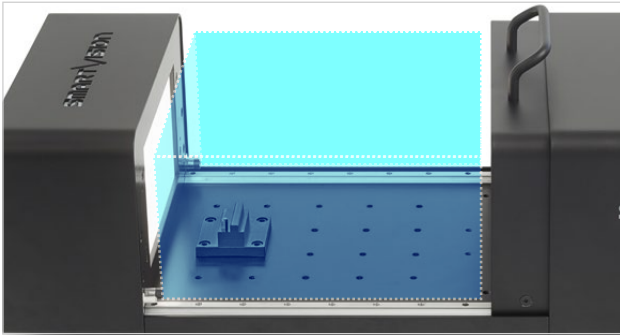
Dedicated Smart Tools

Easy_Tester_Pro: Wide Range of Optional Fixing Tools

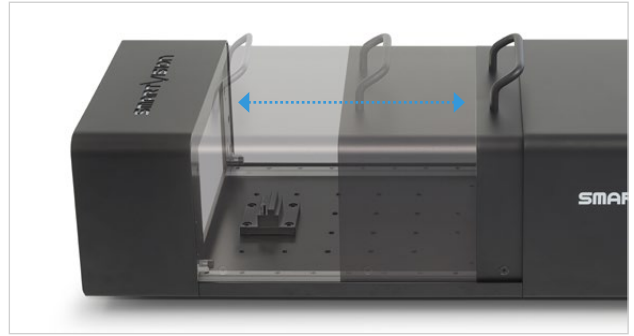


Hardware Highlights

Easy_Tester_Pro: Automatic Uniformity Tester for Optical Industry



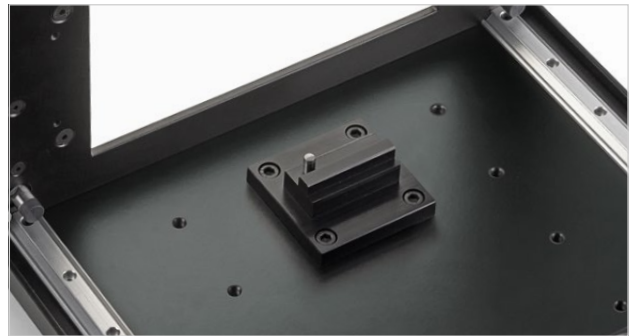
Improved Measuring Chamber: 3 side open, large and protected, full black measuring chamber



Smart Sliding Door: easy to move, self-contained, rugged sliding door, with handle on top



Enhanced Backlight LSM: enhanced backlight LSM with improved area and emission



Tools Support: easy fixing of interchangeable tools, no need of adjustment or alignment



Multi-Color Active Logo: change the color about the status of Easy_Tester_Pro



High Efficiency: well-designed device, plug-and-play and easy-to-use



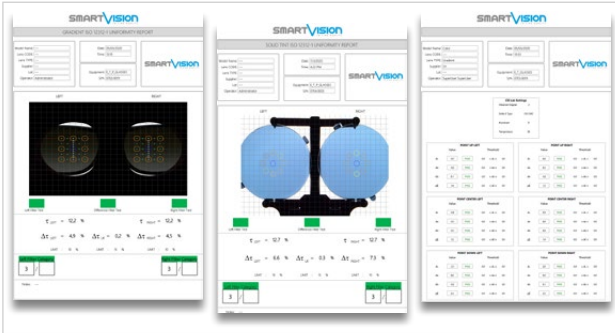
Designed for Industrial: rugged, compact, ergonomic, static and fanless machine



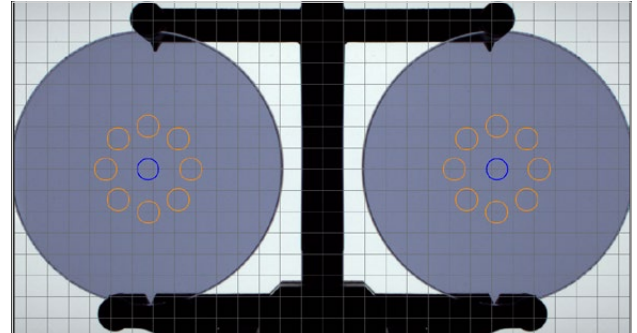
External PC: it ensures easy replacement in case of need, compared to integrated systems

Software Highlights

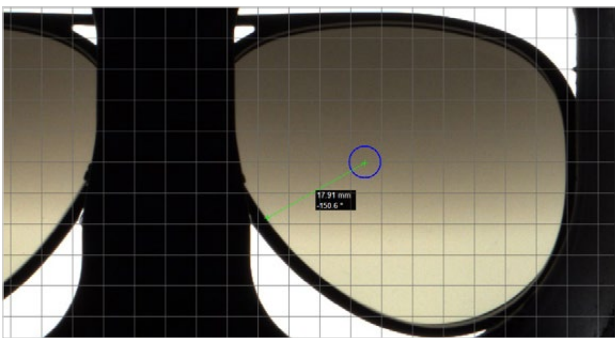
Easy_Tester_Pro: Automatic Uniformity Tester for Optical Industry



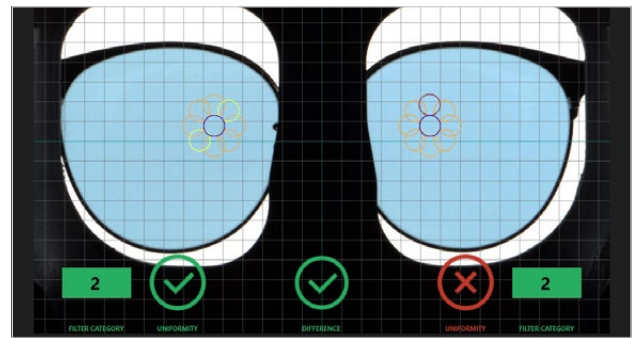
Sharing data results: Excel and PDF data reports with complete info on performed tests



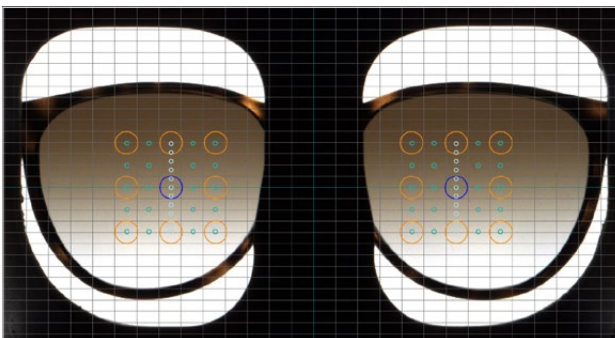
20 Points Measurement: Simultaneous measurement of 20 points, into 2 matrices of 9 points each and 2 references



Line Measurement Tool: Software to measure distance and angle between any two points into the displayed area



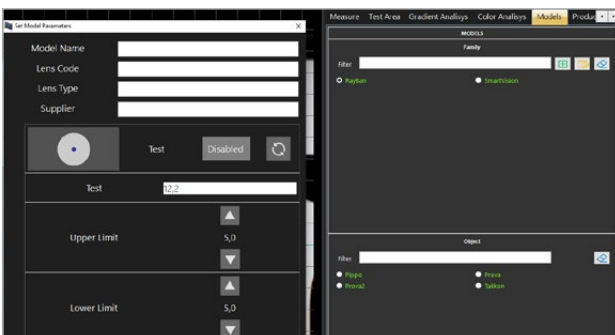
Tolerance Warning: Highlight of points out of tolerance with feedback of non-conforming tested points



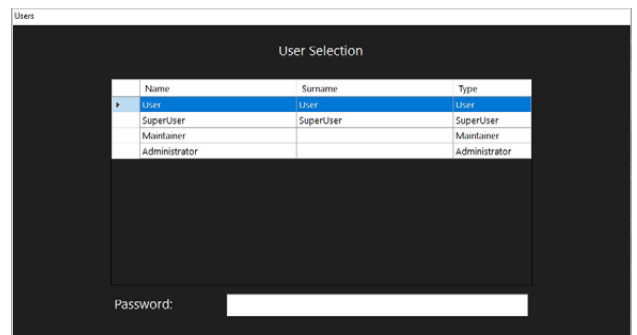
Gradient Profile Check: System check gradient profile both along vertical axis and, optional, horizontal



Color Matching Option: System check the colorimetric differences in terms of estimated ΔL , Δa , Δb and ΔE



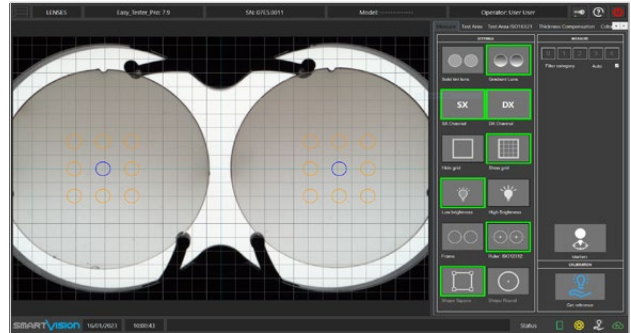
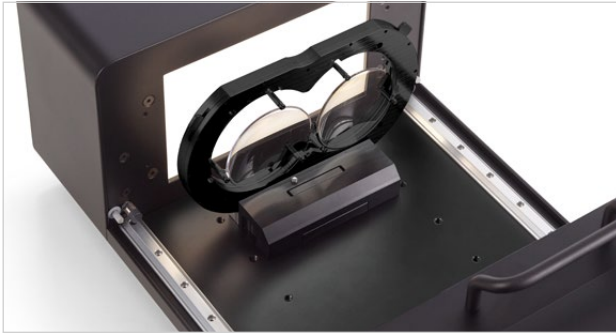
Models Management: Database of different models including entire measurement setups



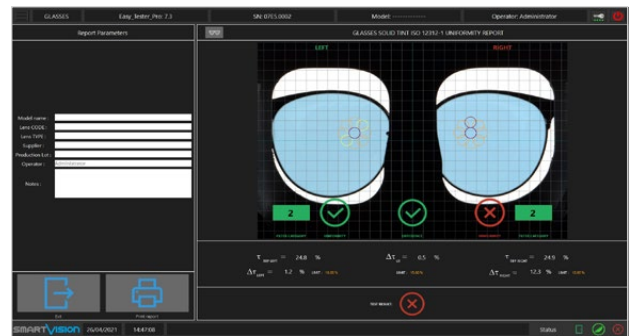
Advanced User Management: Managing system account privileges with four different levels of users

Usage Configurations

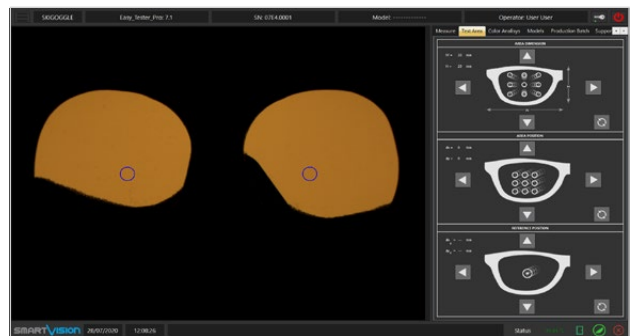
Easy_Tester_Pro: Automatic Uniformity Tester for Optical Industry



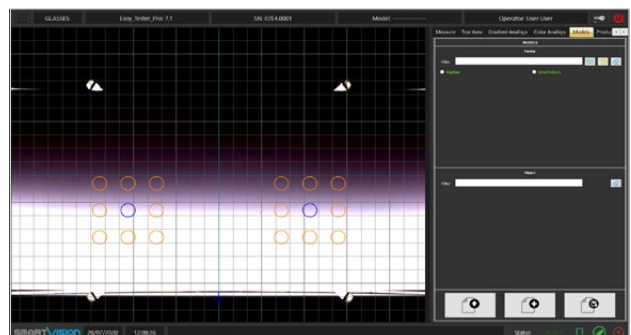
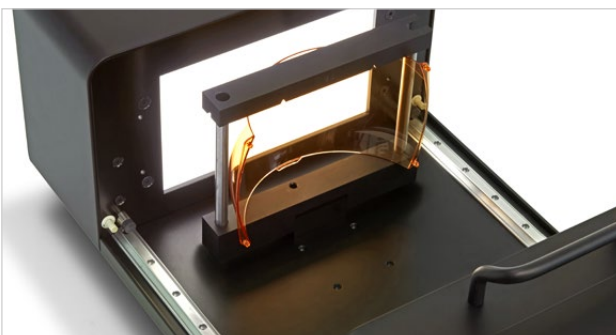
SunLenses: performs a complete uniformity check on lenses, thanks to the specific Lens_Holder. No need of mechanical setup, just place the lenses on the support and start testing.



SunGlasses: has been designed with a reference head form to get a perfect and fast positioning to check SunGlasses with frames.



SkiGoggles: has been designed with a reference head form to get a perfect and fast positioning to check SkiGoggles according to the EN 174-2001.



Masks: was developed with a special support for Masks, which allows easy testing of both solid and gradient masks.

Features & Benefits

Easy_Tester_Pro: Automatic Uniformity Tester for Optical Industry

Main Features	Related Benefits
Automatic Uniformity Tester	NO intervention of the operator in the test Test according to International Standards
Multi-Purpose Instrument with Wide Range of Tools	Wide range of use/configurations and no need of different equipment
Continuous Auto-calibration	No intervention of the operator and no visible calibration No interruption of the measuring cycles
Improved Measuring Chamber	Ergonomic, Fast, Easy accessibility and Tool replacement Full block of External Light
Full Area Calibration with Enhanced Backlight LSM	Improved testing performance No need of calibration when analysis points geometry are changed
In-Line Application Capability	Capability to 100% check Capable of pass-through line
Multi-Color Active Logo	Immediate instrument's status feedback according to logo colors
Filters Category Check Feature	Automatic transmittance tolerance evaluation
Grid Overlay Visualization	Perfect frame alignment
Live-View of Whole Spectacle	Accurate as-worn frame loading, avoiding T% measuring errors due to wrong position Enhanced visualization of Gradient lenses defects
Simultaneous 20 Points Measurement	Fast simultaneous check without any movement of the target No need of lens marking and dismounting as per traditional method
Free Matrix and Reference Points Set-up	Allows testing any dimension and geometry frame No hardware setup is required
Line Measurement Tool (with angle)	Uniformity area compliance check with international standards requirements
Tolerance Warning	Immediate feedback of non-conforming tested points
Production Data Reporting	Production data saved into test report file and "Production batch" database
Thickness Compensation Option	Easy check of different lens shape Security: each user is password protected
Advanced User Management	Access level: each user can only access the functions for which he is enabled Traceability: operator's name is showed in each measurement performed report Allows objective Quality Control of the gradient shape
Gradient Profile Check Option	Without model: check the profile gradient between left and right lens With model: check the profile gradient between reference model & left-right lens
Color Matching Option	Easy check of colorimetric differences
"Small head" and "Big head" software setup	Capable of Adult and Child Spectacles, with specific Smart_HeadForm Accurate as-worn frame positioning
Single Lens Analysis	Capability to analyze a single lens
Square - Round Shape Measuring Pattern	Adaptable to a wide range of frame shapes
Absolute Transmittance Values	Displays absolute transmittance values in reference points
Models Management	Automatic machine setup for any loaded model Allows unskilled operator to properly use the instrument
Light Intensity Tool	Enhanced real-time visual inspection of the lenses, eases the defect evaluation
Mandatory Production Data	Capability to automatically collect mandatory production data for each test International Standards: GB 39552.1 and ISO 16321-1
New Optional available	Functions: QFactor Analysis and Alignment markers Smart_HeadForm Models: Type 1-M, 1-S and 2-M

Technical Specifications

Easy_Tester_Pro: Automatic Uniformity Tester for Optical Industry

Dimensions (mm)	860x320 H.250 (upper door handle included)
Weight (kg)	20 (excluding PC and tools)
Operation Ambient	+10° to +40° C
Power Supply	110-240 Vac 50-60 Hz
Power Consumption	2 A
Communication Interface	USB 3
Case	Black Opaque painted Anodized Aluminum
PC Min. Requirements	Processor i3 3 GHz Haswell technology , 8GB RAM , 500 GB HD , Video card Direct3D DirectX 11.0 True Color minimum resolution 1920x1080 px , External I/O ports USB 3.0 , OS Microsoft Windows 10 with Framework .NET 4.5.2 , Monitor Full HD Touchscreen
Optional PC Device	Powerful All-in-One PC, Full HD Touchscreen, Monitor resolution 1920x1080, Windows 11 PRO 64-bit
Software Interface	Language: English
User Management	User, SuperUser, Maintainer, Administrator (with password login and editable rights)
Data Report	xlsx, xls, pdf
Print Report	Windows installed Printer (optional pdf), xps
Statistical Analysis	Ready to connect with SPC software
PC Software Backup	USB stick containing the backup system (bootable system startup)
Online Support	Pre-installed TeamViewer app Support

Reach Excellence in Quality Control
with SmartVision's Technology



©2023, SmartVision. Technical specifications are approximated and are subject to change without notice. Printing errors excepted.

SMARTVISION
IN LINE QUALITY

T. +39 0432 484765 | info@SmartVision.it | www.SmartVision.it | SmartVision S.r.l. Italy