



*Four Instruments in One for Higher Flexibility*

## Smart\_Projector\_Quattro

High Performance ZOOM Video Measuring Instrument

# Smart\_Projector\_Quattro

High Performance ZOOM Video Measuring Instrument



## Automatic and Productive

Smart\_Projector\_Quattro is an automatic Profile Projector that combines the precision, objectivity, repeatability and user-friendliness guaranteed by SmartVision's Technology.

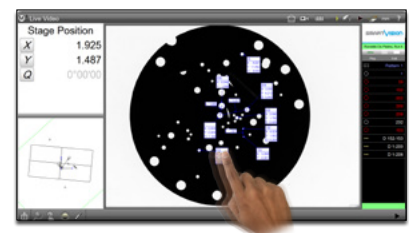
## Four in One

With a innovative optical solution of zoom lenses in only one instrument, Smart\_Projector\_Quattro allows four different magnifications, changing the Field of View by software, making this product a **4-in-1** solution for complete and automatic dimensional check of a wide range of products.

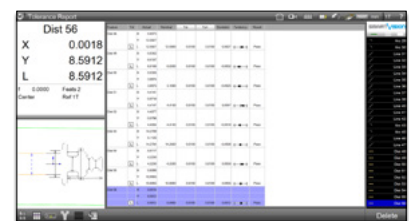
## Accurate

This equipment guarantees measurement stability of the image center when focusing and switching from one level of magnification to another. The benefits given by the **flexibility of the zoom lenses** and the accuracy of the fixed optics are merged together in this equipment with no compromise in precision. **Four different FoV in one unique instrument:** precision, flexibility and savings!

## New Generation Software: TOUCH & MEASURE!



- Multi touch-screen software
- Automatic feature recognition



- Automatic data report
- CSV / TSV / TXT / DXF / PDF

# Features

## High Performance ZOOM Video Measuring Instrument



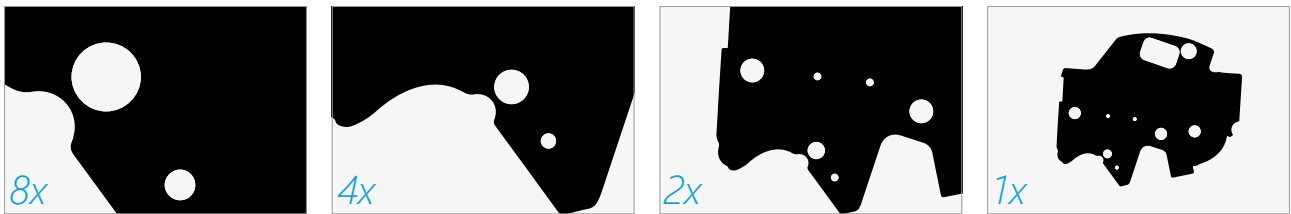
# Product Highlights

## Smart\_Projector\_Quattro - Main Benefits

- Suited for massive (production) quality inspection, in-line control, incoming inspection
- Increases number of quotas and quality check rate, up to 16000 checking features in a few seconds
- Performs full automatic reporting and SPC (Min, Max, Range, Average, Std Dev, 6 Sigma)
- Ready to connect with SPC software
- Suitable for unskilled operators use
- Flexible investment with a fast Return on Investment

## Specification

### High Performance ZOOM Video Measuring Instrument



PC Device	Powerful All-In-One touch screen FULL HD PC with Windows 10 PRO 64-bit, monitor resolution 1920x1080			
Light receiving lens	Double telecentric lens			
Magnification	8x	4x	2x	1x
Field of View <sup>3</sup> (FoV) <sup>3</sup> (mm)	Ø 10	Ø 20	Ø 40	Ø 80
FoV <sup>3</sup> Area (mm) <sup>2</sup>	78	314	1256	5026
Repeatability accuracy <sup>4</sup>	±0.2 µm	±0.4 µm	±0.5 µm	±1 µm
Measurement accuracy <sup>4</sup>	±0.5 µm	±1.5 µm	±3 µm	±6 µm
Measuring Chamber (mm) <sup>5</sup>	203x225x200			
Dimensions (mm)	282x330x1025			
Weight (kg)	40			
Diascopic Light <sup>1</sup>	Collimated			
Episcopic Light <sup>2</sup>	Yes			

<sup>1</sup> Diascopic Light: Collimated Projector with green led light or Standard Directional led backlight.

Collimated projector intensity is software programmable when also episcopic light control (2) is available.

<sup>2</sup> Episcopic Light Control: 4 independent 90° sectors, software programmable, front / episcopic white diffused led light, made to order.

<sup>3</sup> Standard models - other custom FoV available on request.

<sup>4</sup> Precision of measurement (±µm) of a line, obtained measuring a specific calibration target located approximately in FoV center, best focus position, at 25° C ±1°.

<sup>5</sup> The dimensions of the measuring chamber are not the dimensions of the Field of View, therefore they have not to be considered as test area.

©2018, SmartVision. Technical specifications are approximated and are subject to change without notice. Printing errors excepted.