



Easy_Measure

Portable Video Measuring Instrument

Easy_Measure

Portable Video Measuring Instrument

*"Accurate measurements
and digital HD sharp images
in your hand"*



Handheld and Compact

Easy_Measure allows live view measurements of items in a simple and easy way. The samples have just to be placed under the device and, using the software provided, it is possible to perform measurements like distances, points, lines, circles, angles, item count.

Sharp and Accurate

Due to its high precision special telecentric optic system and integrated digital color camera, it allows to get **high resolution and high quality calibrated large digital images**, without the **distortions** of traditional microscopes.

In addition to this, a special high intensity white led light source, divided in 4 independent 90° sectors, creates a **diffused and unidirectional low angle light**. This light enhances surface features, reduces reflections and ensures constant and excellent color response, a long product life and a high reliability.

Industrial and Productive

Special optical solutions and light sources are available for specific needs. Due to its good price / performances ratio, to the excellent image quality and to its ergonomic shape, **Easy_Measure** is a **perfect device for visual inspection and tracking** of mechanical components, plastic, glass, textures, prints, wood, hide, etc.

*ONE INSTRUMENT,
Many Operating Modalities*



1. Handheld use



2. Upside down use



3. Fixed stand use [optional]

Features

Easy_Measure - Portable Video Measuring Instrument



Flat keyboard for light setting
(On/Off - intensity - 4 sectors selection)

Single power + usb connection cable

Industrial high resolution color digital camera

Rubber rings for safe hand-grip

Telecentric optics for accurate measures,
Superb and sharp images

Industrial grade materials / components

Independent 4 sectors diffused white led light

4 viewing windows

Diffusive light ring for perfect surface
illumination without reflections



Extreme high definition digital live view and
accurate colors

Acquire and store extreme high definition digital
images

Extended range of measurements

Compare master item (any image saved on the
pc) with the live view image

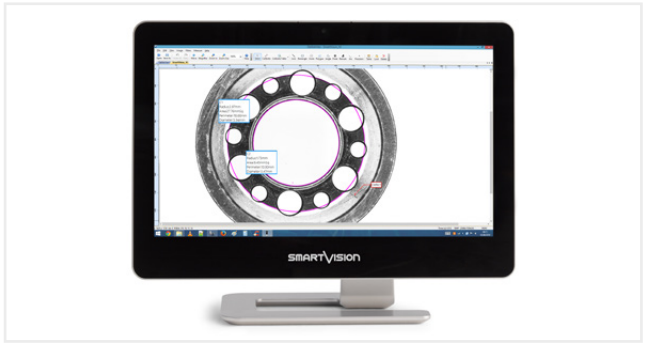
Save images with overlay measurements
Export the measurement data report

Kit

Easy_Measure Includes



Calibration target



Dedicated Software

Options

Easy_Measure Accessories



Stand with backlight



Two arms white LED light



X, Y Positioning moving stage



Fixing Tools



Carrying Case

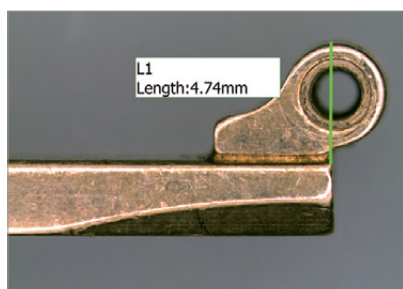


QHD monitor (2.560x1.440px)

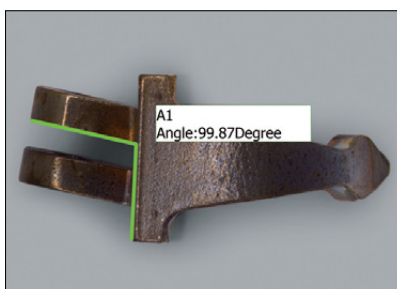
Application Cases

Easy_Measure - Portable Video Measuring Instrument

- Production and laboratory quality check
- Repetitive incoming inspections
- Production processing inspections
- Hard-to-reach points check
- Dimensional measurement on live view & images
- Wide range of accurate measurements
- Automatic images storing
- Visual comparison with master picture



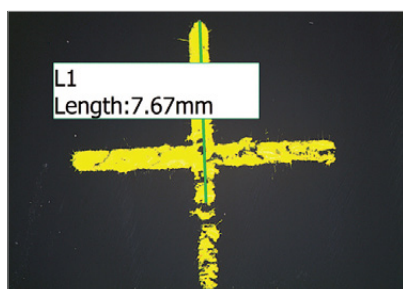
Dimensional check of a eyewear item



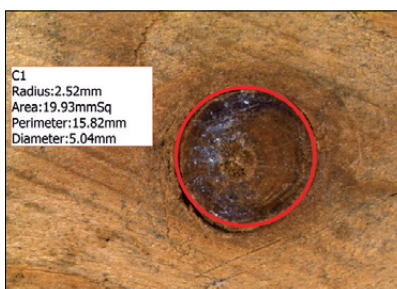
Dimensional check of a component



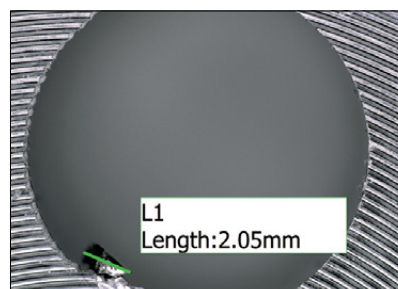
Scratch measurement on a surface



Dimensional check on a surface



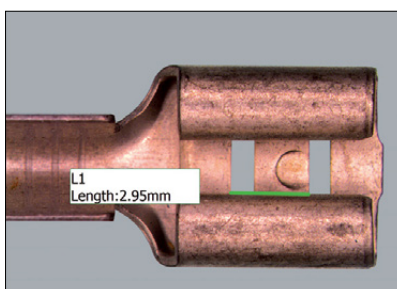
Dimensional check of a wood knot



Dimensional check of a flaw in a steel item



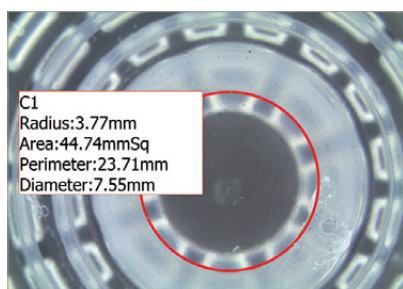
Scratch measurement on glass



Dimensional check of a eletrrical component



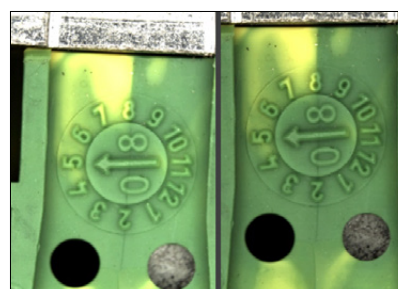
Dimensional check of a printed surface



Dimensional check of a plastic item



Dimensional check on printed surface



Live comparison with master picture

Specifications

Easy_Measure - Portable Video Measuring Instrument

Dimensions (mm)	70x250	70x250
Weight (kg)	1.5	1.5
Operation ambient °C	+10 to +40°C	
Power supply	110-240 Vac 50-60 Hz	
Camera	3 Mega Pixel Color USB 2.0 - direct connection to the PC or Tablet	
Light receiving lens	Telecentric lens	
Field of View (FoV) (mm)	6.5x4.9	25.5x19.2
FoV Diagonal (mm)	8.1	31.9
FoV Area (mm)	32	490
Magnification*	100X	25X
Resolution (µm)	3.25	12.5
Illumination system	Diffused white led light, divided in 4 sectors (90° each) with independent selection	
	Back light [optional with stand]	
	Led spot light [optional with arms lights]	
Measurement points	Manual - Point and Click	
Measure buttons	Show Scale Line, Calibrate, Calibrate Table, Decimal, Measurement List, Layer, Delete All, UnLock / Lock, Select, Line, Parallel, Perpendicular, Rectangle, 2-points Circle, 3-points Circle, Diameter Circle, Concentric Circle, Polyline, Polygon, Arc, Angle, Point, Annotate, Delete, Cross-Ruler	
Color Control	Gamma, Contrast, Saturation, Color Enhancement, Monochrome, White balance, Area WB, Black balance, Flat fielding, Red, Green, Blue	
Image Control	Exposure Control, Color control, Fluorescence, Levels, Capture Mode, Parameters	
Image Processing	Brightness, Gamma, Contrast, Saturation, Sharpen, Levels, Extend DoF, Stitching, HDR image	
Available Image Types	JPEG, BMP, TIFF, RAW	
Data Report	xls, txt	
Print Report	Windows installed printer (optional pdf), xps	
Interface Language	English, Italian	
SmartVision PC Device	Not provided [on request]	
PC minimum requirements	OS: Windows 8 (32 & 64 bit) - CPU: Intel Processor (Core 2 Duo or higher) Memory: 2 GB or More recommended - USB ports: USB2.0 Hi-Speed port	

* Using a typical 27" QHD monitor (2560x1440 px)



©2018, SmartVision. Technical specifications are approximated and are subject to change without notice. Printing errors excepted.



Info@SmartVision.it | www.SmartVision.it