



Smart_Wire_Measurement

Measure and check the thickness of wire insulation samples

Insulation Measurement

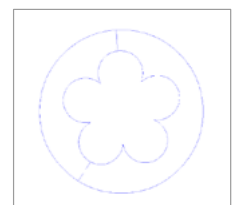
The Insulation Module provides the ability for measurement with automatic strand count determination as well as the possibility to manually select the appropriate number of strands.



The Wire Insulation Measurement function first seeks out the absolute minimum distance between the outer "blob" of the insulation profile, and the inner "blob" of the insulation profile. Once this minimum distance is determined the system then breaks the diameter of the insulation into (6) 60 degree segments, based on the minimum distance at 0 degrees. Then the minimum distance between the inner and outer "blobs" is determined from within each of these 60 degree segments. This mechanism is utilized when there is a single strand on the inside lobe (such as in a simple gasket), or if there are 6 or more lobes or wire strands.

- "d0" represents the minimum distance
- "d1" represents the maximum distance
- the character "d" in the detail information screen represents the average distance

Insulation 1	
d0	0.058
d1	0.062
d	0.060
C% 92.3	X 0.001
Y 0.423	f 0.000
Pts 2415 of 2415	Centroid
Ref 1T	XY



Smart_Wire_Measurement

Measure and check the thickness of wire insulation samples

Strand Count Determination

- **Automatic**

By selecting the "Auto Strand" recognition button and clicking on an edge of the insulation sample, the System determines the number of strands automatically based on the data cloud of points collected.



- **Fixed-Strands Measurement**

If the automatic strands count calculation is not able to detect the right number of strands or the right shape of the wire, the number of strands can be manually specified. Choose one of six different strand count selections. As with the Auto mode select the insulation tool and click on an edge of the insulation sample.



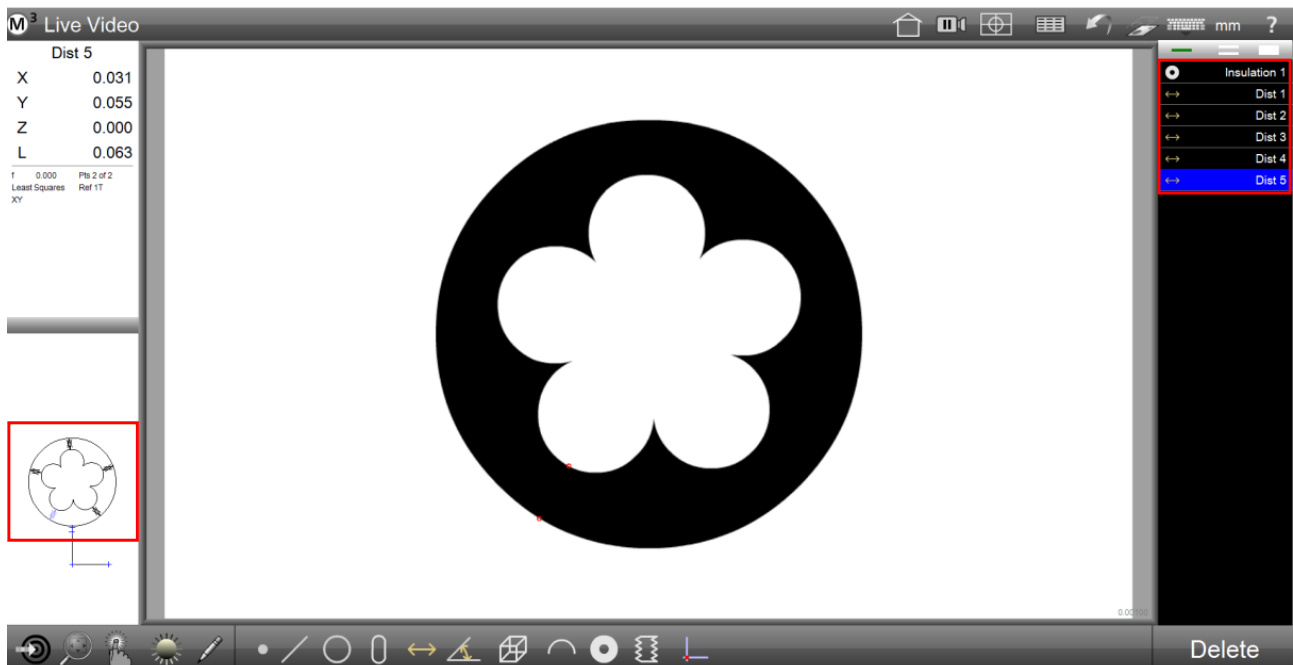
Distance Feature Results Mode

If the Distances Mode button (shown at right) within the Insulation menu is enabled, the Software automatically displays and creates every distance between strands and edges during the regular insulation measurement.



The feature can be measured with any of the Insulation measurement tools described above and the measured distances of the insulation will be shown in the Part View and in the Feature List.

It also determines the minimum distance, the maximum distance, and the average distance between strands and edges within the insulation profile. The number of distances depends on the number of strands.



©2018, SmartVision. Technical specifications are approximated and are subject to change without notice. Printing errors excepted.
The images and/or drawings in this document are for illustrative purposes only.



Info@SmartVision.it | www.SmartVision.it

Ver01_Rev01.EN.04.2018